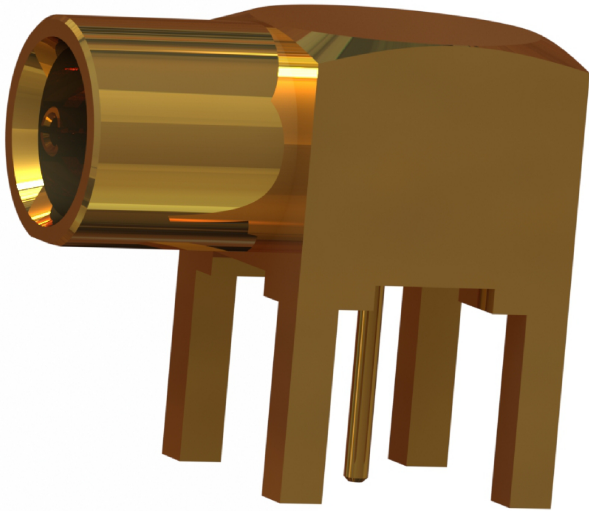
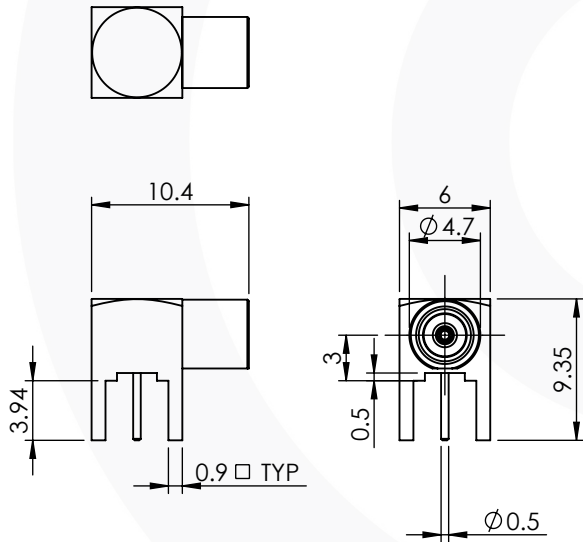


## MCX RIGHT ANGLE PCB JACK

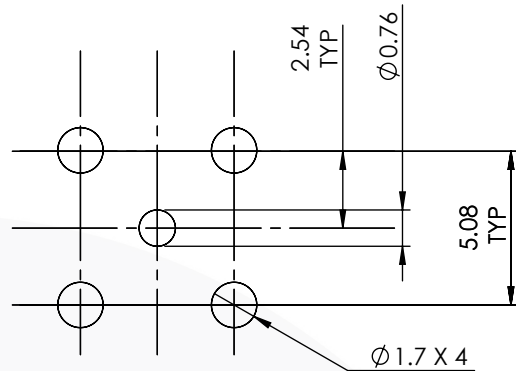
### 45-465-D6



images for illustration purposes only



### Recommended PCB Layout:



### Electrical Specification

Impedance: 75 Ohm  
 Frequency: 0-6 GHz  
 Dielectric W/V: 500 Veff  
 Insulation res: 1000 M-Ohm

### Mechanical Specification

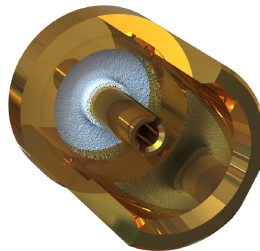
Contact Retention: 20 N min  
 Cable Retention: N/A  
 Mating cycles: 500  
 Weight: 1.77 g

### Environmental Specification

Operating Temp: -55 to +155 Deg C.  
 IP Rating (Mated): IP 40

### Connector Interface

image for illustration purposes only



3	INSULATOR	PTFE	N/A
2	CENTRE CONTACT	BERYLLIUM COPPER	GOLD
1	BODY	BRASS	GOLD
ITEM	DESCRIPTION	MATERIAL	PLATING

<b>A4</b>	SHEET 1 OF 1	DIMENSIONS ARE IN MILLIMETRES		
REVISION :	A00	NAME	SIGNATURE	DATE
ISSUE :	1	DRAWN	IG	17/07/2018
		CHK'D	B.S.	02/08/2018
		APPV'D		
6-8 COLNE ROAD, TWICKENHAM, MIDDLESEX. TW1 4JR				
THE INFORMATION IS GIVEN AS AN INDICATION ONLY AND IS SUBJECT TO CHANGE WITHOUT NOTICE. IN THE CONTINUAL GOAL TO IMPROVE OUR PRODUCTS, WE RESERVE THE RIGHT TO MAKE ANY MODIFICATIONS NECESSARY WITHOUT PRIOR NOTICE.				