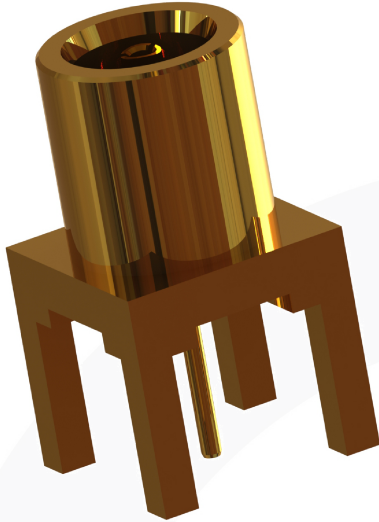
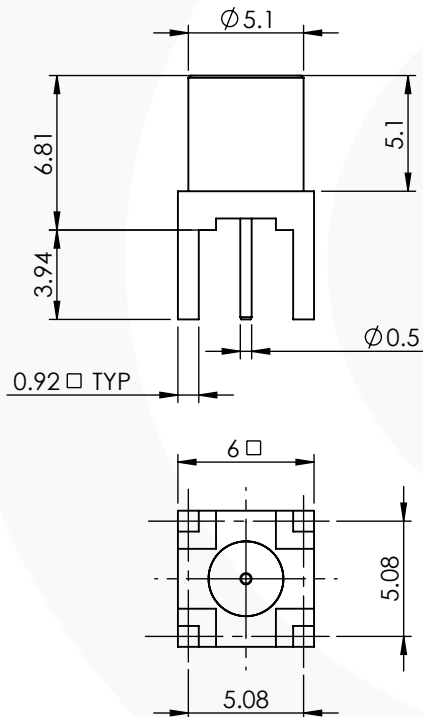


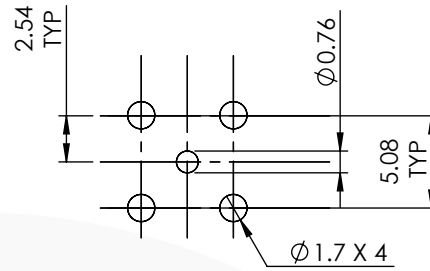
MCX VERTICAL PCB JACK 45-450-D6



images for illustration purposes only



Recommended PCB Layout:



Environmental Specification

Operating Temp: -55 to +155 Deg C.
IP Rating (Mated): IP 40

Electrical Specification

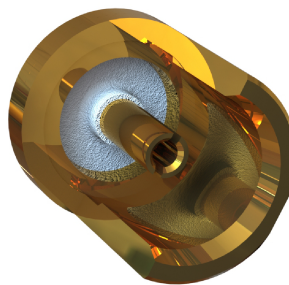
Impedance: 75 Ohm
Frequency: 0-6 GHz
Dielectric W/V: 500 Veff
Insulation res: 1000 M-Ohm

Mechanical Specification

Contact Retention: 20 N min
Cable Retention: N/A
Mating cycles: 500
Weight: 0.97 g

Connector Interface

image for illustration purposes only



3	INSULATOR	PTFE	N/A
2	CENTRE CONTACT	BERYLLIUM COPPER	GOLD
1	BODY	BRASS	GOLD
ITEM	DESCRIPTION	MATERIAL	PLATING

A4	SHEET 1 OF 1	DIMENSIONS ARE IN MILLIMETRES		
REVISION :	A00	NAME	SIGNATURE	DATE
ISSUE :	0	DRAWN	IG	19/07/2018
		CHK'D	GE	20/07/2018
		APPV'D		
6-8 COLNE ROAD, TWICKENHAM, MIDDLESEX. TW1 4JR THE INFORMATION IS GIVEN AS AN INDICATION ONLY AND IS SUBJECT TO CHANGE WITHOUT NOTICE. IN THE CONTINUAL GOAL TO IMPROVE OUR PRODUCTS, WE RESERVE THE RIGHT TO MAKE ANY MODIFICATIONS NECESSARY WITHOUT PRIOR NOTICE.				