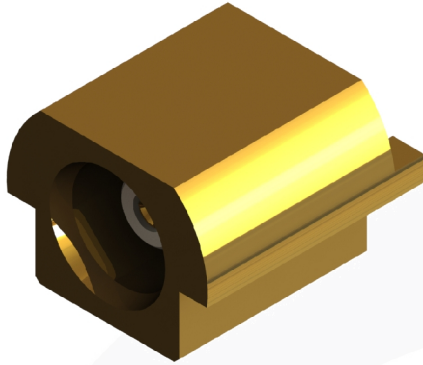
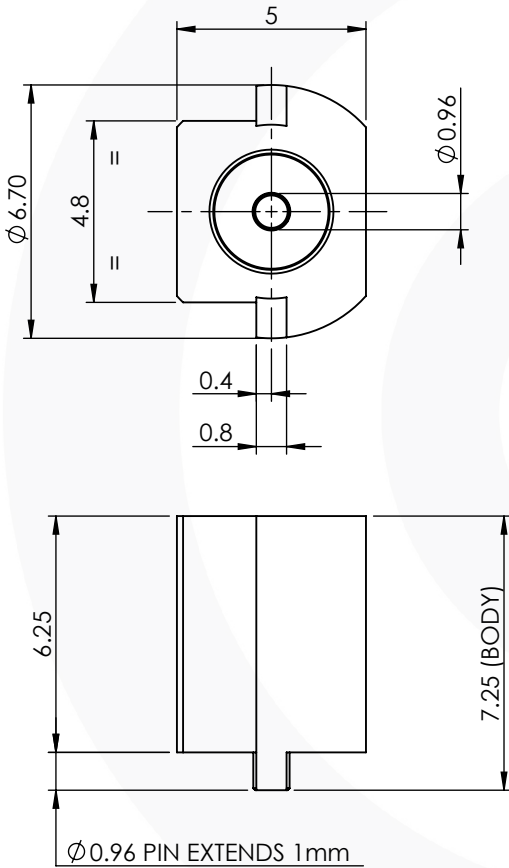


## MCX END LAUNCH PCB JACK

### 45-410-D3



images for illustration purposes only



### Environmental Specification

Operating Temp: -55 to +155 Deg C.

IP Rating (Mated): IP 40

### Electrical Specification Mechanical Specification

Impedance: 50 Ohm

Frequency: 0-6 GHz

Dielectric W/V: 500 Veff

Insulation res: 1000 M-Ohm

Contact Retention: 10 N min

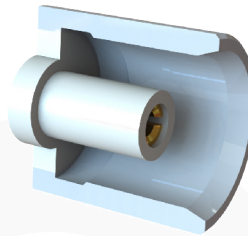
Cable Retention: N/A

Mating cycles: 500

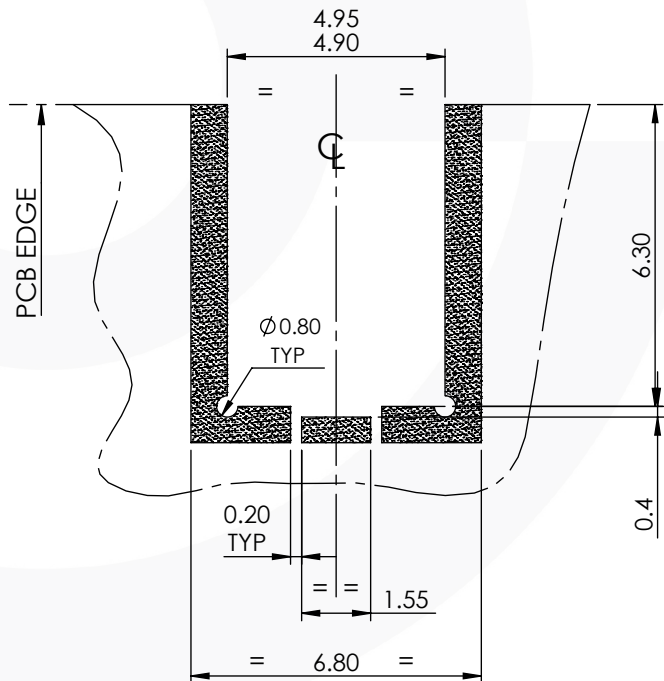
Weight: 1.09 g

### Connector Interface

image for illustration purposes only



### Recommended PCB Layout



3	INSULATOR	PTFE	N/A
2	CENTRE CONTACT	BERYLLIUM COPPER	GOLD
1	BODY	BRASS	GOLD
ITEM	DESCRIPTION	MATERIAL	PLATING

<b>A4</b>	SHEET 1 OF 1	DIMENSIONS ARE IN MILLIMETRES		
REVISION :	A00	NAME	SIGNATURE	DATE
ISSUE :	1	DRAWN	G.E.	25/06/2018
		CHK'D	I.G.	25/06/2018
		APPV'D		
<b>6-8 COLNE ROAD, TWICKENHAM, MIDDLESEX, TW1 4JR</b>				
<small>THE INFORMATION IS GIVEN AS AN INDICATION ONLY AND IS SUBJECT TO CHANGE WITHOUT NOTICE. IN THE CONTINUAL GOAL TO IMPROVE OUR PRODUCTS, WE RESERVE THE RIGHT TO MAKE ANY MODIFICATIONS NECESSARY WITHOUT PRIOR NOTICE.</small>				