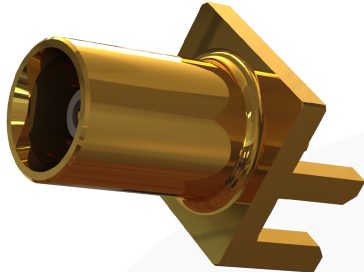
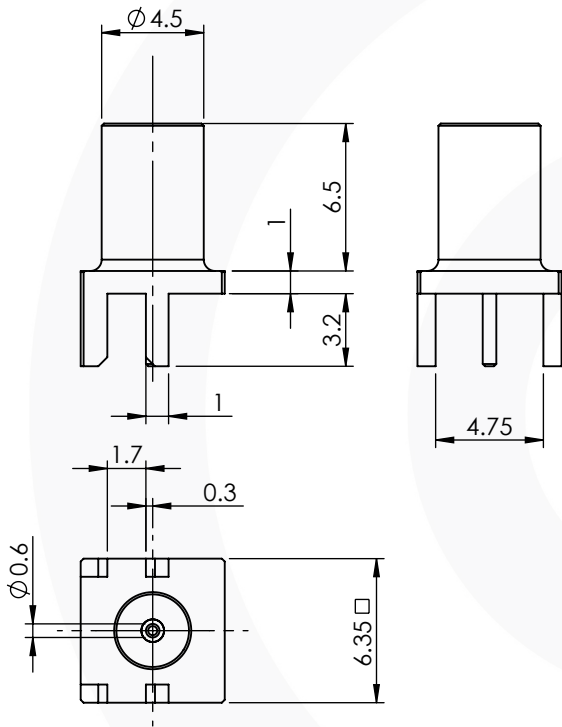


MCX EDGE MOUNT PCB JACK

45-410-D3-1.6



images for illustration purposes only



Environmental Specification

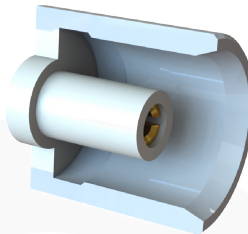
Operating Temp: -55 to +155 Deg C.
IP Rating (Mated): IP 40

Electrical Specification Mechanical Specification

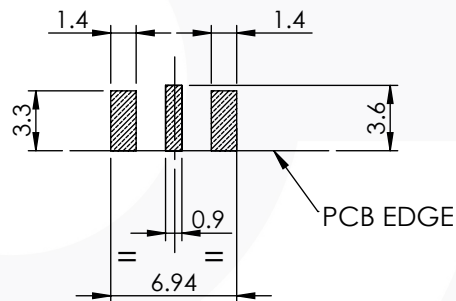
Impedance: 50 Ohm	Contact Retention: 15 N min
Frequency: 0-6 GHz	Cable Retention: N/A
Dielectric W/V: 500 Veff	Mating cycles: 500
Insulation res: 1000 M-Ohm	Weight: 0.82 g

Connector Interface

image for illustration purposes only



Recommended PCB Layout



3	INSULATOR	PTFE	N/A
2	CENTRE CONTACT	BERYLLIUM COPPER	GOLD
1	BODY	BRASS	GOLD
ITEM	DESCRIPTION	MATERIAL	PLATING

A4	SHEET 1 OF 1	DIMENSIONS ARE IN MILLIMETRES		
REVISION :	A00	NAME	SIGNATURE	DATE
ISSUE :	1	DRAWN	I.G.	05/04/2017
		CHK'D	G.E.	06/04/2017
		APPV'D		
6-8 COLNE ROAD, TWICKENHAM, MIDDLESEX. TW1 4JR				
THE INFORMATION IS GIVEN AS AN INDICATION ONLY AND IS SUBJECT TO CHANGE WITHOUT NOTICE. IN THE CONTINUAL GOAL TO IMPROVE OUR PRODUCTS, WE RESERVE THE RIGHT TO MAKE ANY MODIFICATIONS NECESSARY WITHOUT PRIOR NOTICE.				