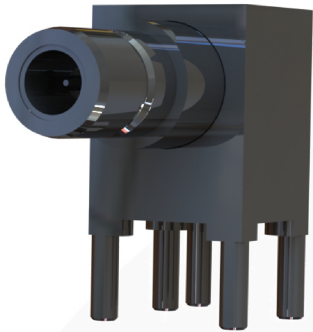


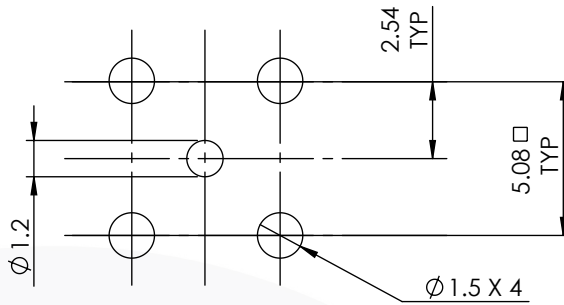
## SMB RIGHT ANGLE PCB JACK

### 32-465-Q3



images for illustration purposes only

### Recommended PCB Layout



### Environmental Specification

Operating Temp: -55 to +155 Deg C.  
IP Rating (Mated): IP 44

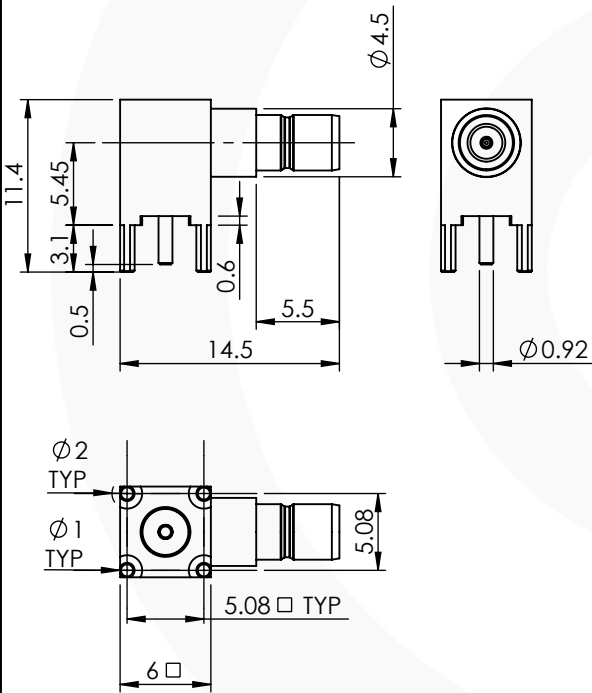
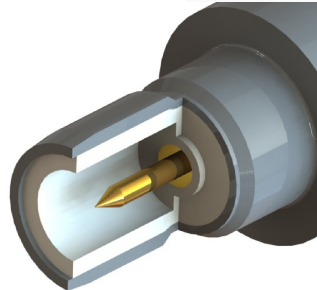
### Electrical Specification    Mechanical Specification

Impedance: 50 Ohm	Contact Retention: N/A
Frequency: 0-3 GHz	Cable Retention: N/A
Dielectric W/V: 1000 Veff	Mating cycles: 500
Insulation res: 5000 M-Ohm	Weight: 2.79 g

**CAN BE USED IN NON-MAGNETIC APPLICATIONS**

### Connector Interface

image for illustration purposes only



3	INSULATOR	PTFE	N/A
2	CENTRE CONTACT	BRASS	SILVER
1	BODY	BRASS	WHITE BRONZE
ITEM	DESCRIPTION	MATERIAL	PLATING

<b>A4</b>	SHEET 1 OF 1	DIMENSIONS ARE IN MILLIMETRES		
REVISION :	A00	NAME	SIGNATURE	DATE
ISSUE :	1	DRAWN	IG	31/10/2017
		CHK'D	GE	01/11/2017
		APPV'D		
6-8 COLNE ROAD, TWICKENHAM, MIDDLESEX. TW1 4JR				
THE INFORMATION IS GIVEN AS AN INDICATION ONLY AND IS SUBJECT TO CHANGE WITHOUT NOTICE. IN THE CONTINUAL GOAL TO IMPROVE OUR PRODUCTS, WE RESERVE THE RIGHT TO MAKE ANY MODIFICATIONS NECESSARY WITHOUT PRIOR NOTICE.				