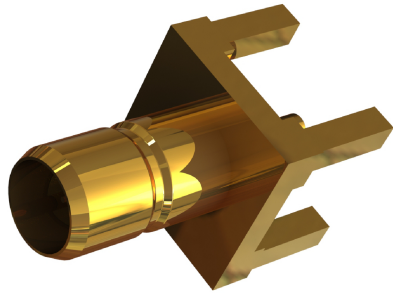
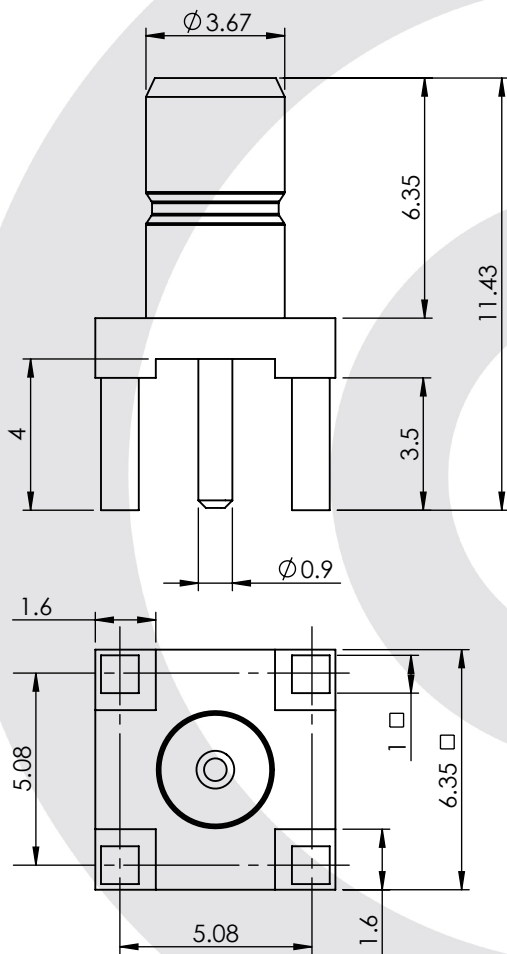


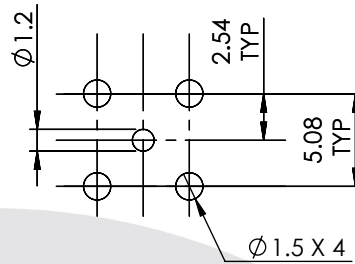
SMB VERTICAL PCB JACK 32-450-D6



images for illustration purposes only



Recommended PCB Layout



Environmental Specification

Operating Temp: -55 to +155 Deg C.
IP Rating (Mated): IP 40

Electrical Specification Mechanical Specification

Impedance: 75 Ohm Contact Retention: N/A
Frequency: 0-2 GHz Cable Retention: N/A
Dielectric W/V: 750 Veff Mating cycles: 250
Insulation res: 5000 M-Ohm Weight: 0.72 g

Connector Interface

image for illustration purposes only



3	INSULATOR	PTFE	N/A
2	CENTRE CONTACT	BRASS	GOLD
1	BODY	BRASS	GOLD
ITEM	DESCRIPTION	MATERIAL	PLATING

A4	SHEET 1 OF 1	DIMENSIONS ARE IN MILLIMETRES		
REVISION :	A00	NAME	SIGNATURE	DATE
ISSUE :	2	DRAWN	IG	17/04/2014
		CHK'D	GE	17/04/2014
		APPV'D		
6-8 COLNE ROAD, TWICKENHAM, MIDDLESEX, TW1 4JR				
THE INFORMATION IS GIVEN AS AN INDICATION ONLY AND IS SUBJECT TO CHANGE WITHOUT NOTICE. IN THE CONTINUAL GOAL TO IMPROVE OUR PRODUCTS, WE RESERVE THE RIGHT TO MAKE ANY MODIFICATIONS NECESSARY WITHOUT PRIOR NOTICE.				