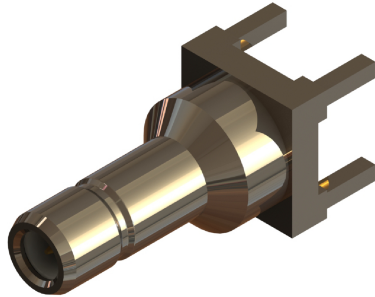


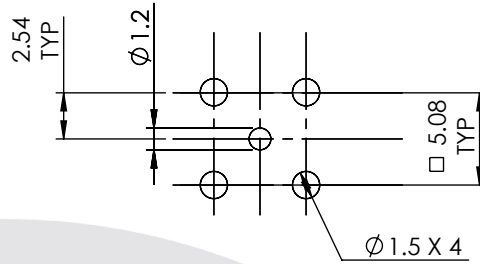
SMB STRAIGHT PCB JACK RECEPTACLE

32-450-B3



images for illustration purposes only

Recommended PCB Layout



Environmental Specification

Operating Temp: -55 to +155 Deg C.
IP Rating (Mated): IP 40

Electrical Specification

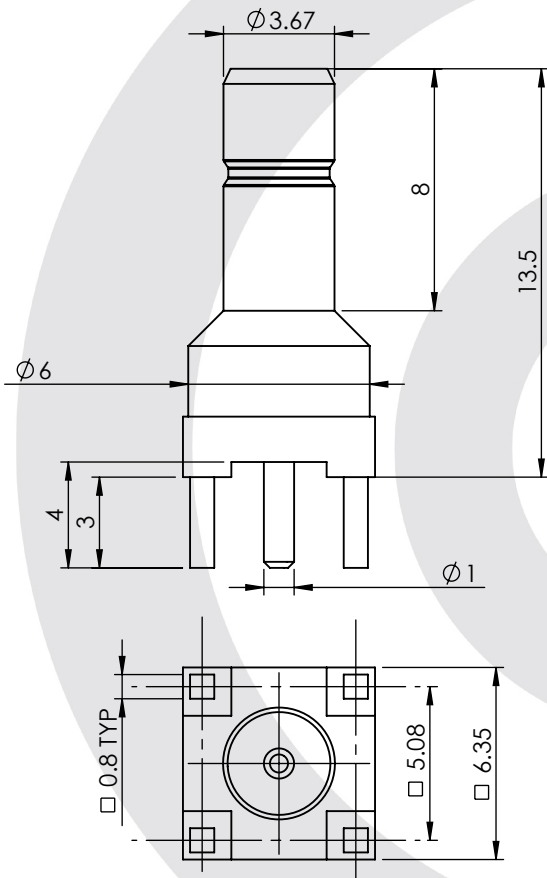
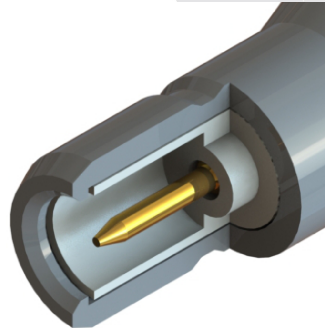
Impedance: 50 Ohm
Frequency: 0-4.5 GHz
Dielectric W/V: 750 Veff
Insulation res: 5000 M-Ohm

Mechanical Specification

Contact Retention: N/A
Cable Retention: N/A
Mating cycles: 500
Weight: 1.58 g

Connector Interface

image for illustration purposes only



3	INSULATOR	PTFE	N/A
2	CENTRE CONTACT	BRASS	GOLD
1	BODY	BRASS	NICKEL
ITEM	DESCRIPTION	MATERIAL	PLATING

A4	SHEET 1 OF 1	DIMENSIONS ARE IN MILLIMETRES		
REVISION :	A01	NAME	SIGNATURE	DATE
ISSUE :	1	DRAWN	IG	22/09/2014
		CHK'D	GE	22/09/2014
		APPV'D		
6-8 COLNE ROAD, TWICKENHAM, MIDDLESEX. TW1 4JR				
THE INFORMATION IS GIVEN AS AN INDICATION ONLY AND IS SUBJECT TO CHANGE WITHOUT NOTICE. IN THE CONTINUAL GOAL TO IMPROVE OUR PRODUCTS, WE RESERVE THE RIGHT TO MAKE ANY MODIFICATIONS NECESSARY WITHOUT PRIOR NOTICE.				