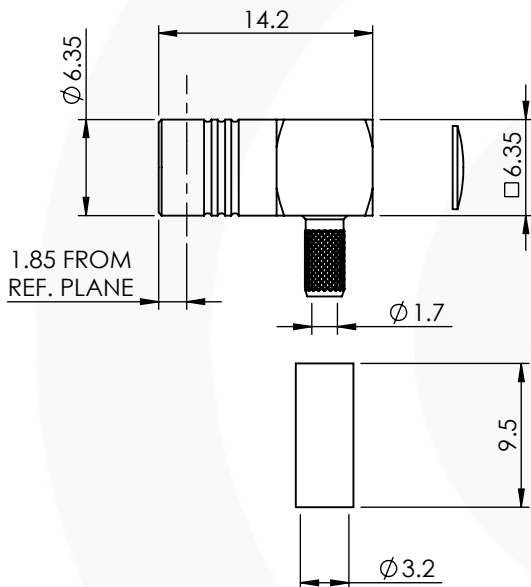


SMB RIGHT ANGLE SOLDER/CRIMP PLUG 32-105-1-D3-AD



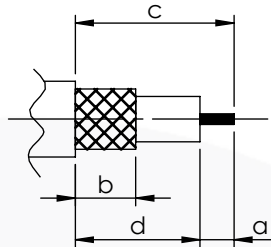
images for illustration purposes only



Suitable for Cables:

(AD) RG316, RG174, RG188, LMR100, WBC100, URM95, KX3, KX22

Stripping Dimensions



a = 1.5 mm
b = 7.0 mm
c = 8.5 mm
d = 7.0 mm

* CUT FOIL TO DIM. "b"

Assembly Procedure: AP017

Tooling

Centre Contact: Solder Tool No: Not Applicable
Crimp Sleeve: Hex 3.25mm A/F Tool No: 336J
Alignment Tool: Not Applicable Extraction: Not Applicable

Environmental Specification

Operating Temp: -55 to +155 Deg C.
IP Rating (Mated): IP 44

Electrical Specification

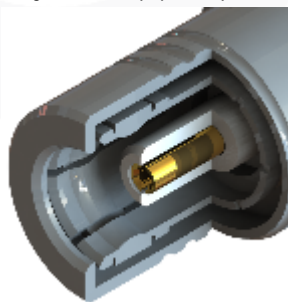
Impedance: 50 Ohm
Frequency: 0-4 GHz
Dielectric W/V: 1000 Veff
Insulation res: 1000 M-Ohm

Mechanical Specification

Contact Retention: 10 N min
Cable Retention: 50 N min
Mating cycles: 500
Weight: 3.03 g

Connector Interface

image for illustration purposes only



8	CAP	BRASS	GOLD
7	OUTER BODY	BRASS	GOLD
6	OUTER TINE BODY	BRASS	GOLD
5	RESILIENT RING	BERYLLIUM COPPER	NICKEL
4	CRIMP SLEEVE	BRASS	GOLD
3	INSULATOR	PTFE	N/A
2	CENTRE CONTACT	BERYLLIUM COPPER	GOLD
1	REAR BODY	BRASS	GOLD
ITEM	DESCRIPTION	MATERIAL	PLATING

A4	SHEET 1 OF 1	DIMENSIONS ARE IN MILLIMETRES		
REVISION :	A00	NAME	SIGNATURE	DATE
ISSUE :	1	DRAWN	G.E.	07/04/20
		CHK'D	P.S.	07/04/20
		APPV'D		
6-8 COLNE ROAD, TWICKENHAM, MIDDLESEX. TW1 4JR THE INFORMATION IS GIVEN AS AN INDICATION ONLY AND IS SUBJECT TO CHANGE WITHOUT NOTICE. IN THE CONTINUAL GOAL TO IMPROVE OUR PRODUCTS, WE RESERVE THE RIGHT TO MAKE ANY MODIFICATIONS NECESSARY WITHOUT PRIOR NOTICE.				