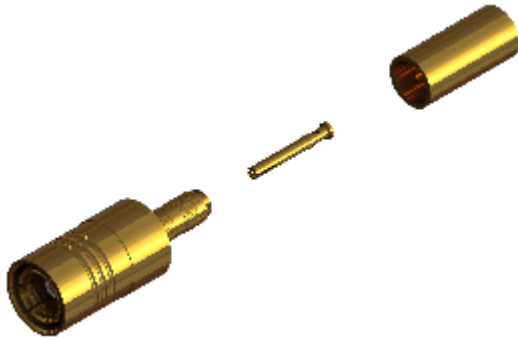
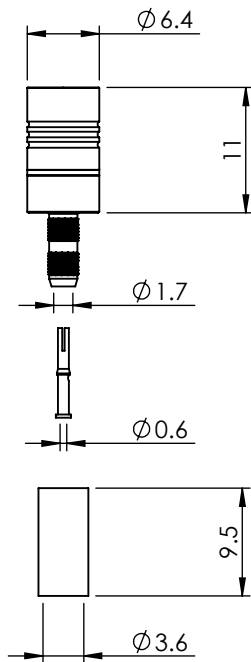


SMB STRAIGHT CRIMP/CRIMP PLUG 32-005-D3-AE



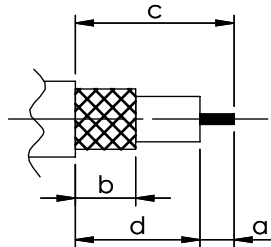
images for illustration purposes only



Suitable for Cables:

(AE) RD316, RD188

Stripping Dimensions



a = 3.5 mm
b = 7.5 mm
c = 12.5 mm
d = 9.0 mm

* CUT FOIL TO DIM. "b"

Assembly Procedure: AP020

Tooling

Centre Contact: Indent Crimp Tool No: DMC AFM8

Crimp Sleeve: HEX 3.84mm A/F Tool No: 336J

Environmental Specification

Operating Temp: -55 to +155 Deg C.

IP Rating (Mated): IP 44

Electrical Specification

Impedance: 50 Ohm

Frequency: 0-4 GHz

Dielectric W/V: 1000 Veff

Insulation res: 1000 M-Ohm

Mechanical Specification

Contact Retention: 10 N min

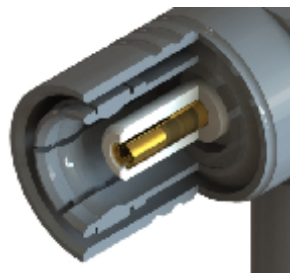
Cable Retention: 100 N min

Mating cycles: 500

Weight: 2.46 g

Connector Interface

image for illustration purposes only



7	OUTER BODY	BRASS	GOLD
6	OUTER TINE BODY	BRASS	GOLD
5	RESILIENT RING	BERYLLIUM COPPER	NICKEL
4	CRIMP SLEEVE	BRASS	GOLD
3	INSULATOR	PTFE	N/A
2	CENTRE CONTACT	BERYLLIUM COPPER	GOLD
1	REAR BODY	BRASS	GOLD
ITEM	DESCRIPTION	MATERIAL	PLATING

A4	SHEET 1 OF 1	DIMENSIONS ARE IN MILLIMETRES		
REVISION :	A01	NAME	SIGNATURE	DATE
ISSUE :	1	DRAWN	GE	07/01/2013
		CHK'D	IG	07/01/2013
		APPV'D		
6-8 COLNE ROAD, TWICKENHAM, MIDDLESEX. TW1 4JR				
THE INFORMATION IS GIVEN AS AN INDICATION ONLY AND IS SUBJECT TO CHANGE WITHOUT NOTICE. IN THE CONTINUAL GOAL TO IMPROVE OUR PRODUCTS, WE RESERVE THE RIGHT TO MAKE ANY MODIFICATIONS NECESSARY WITHOUT PRIOR NOTICE.				