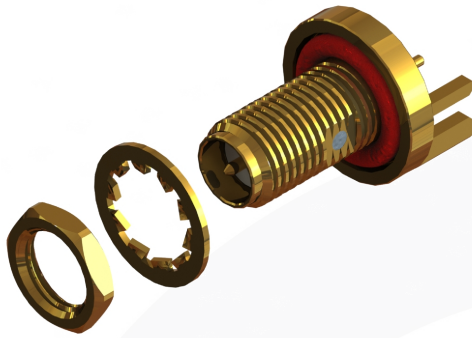
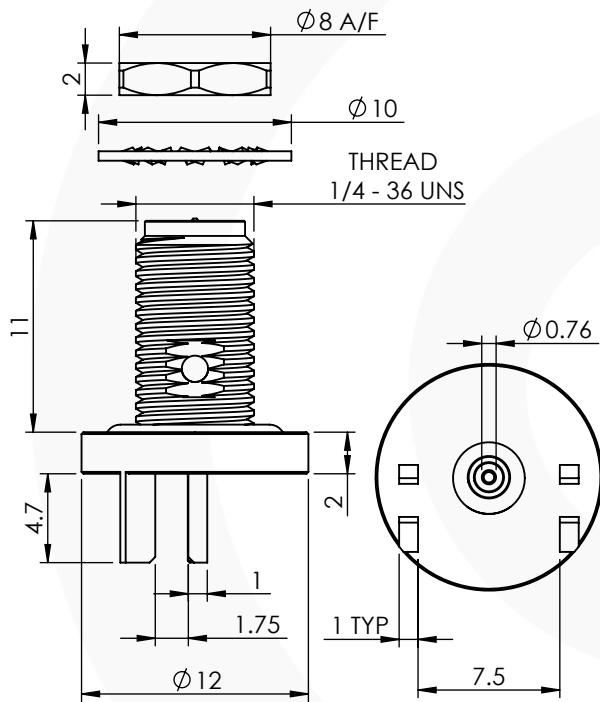


RP SMA END LAUNCH IP68 BULKHEAD JACK

31-462-1-D3-1.6



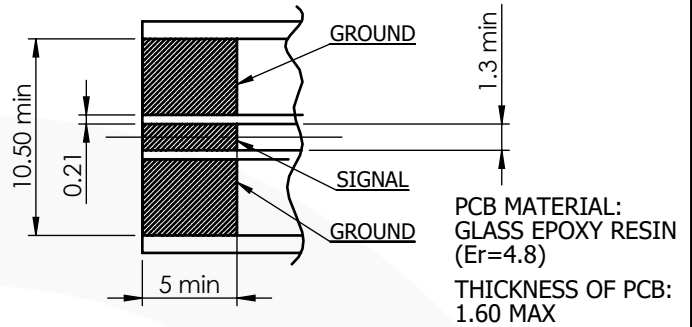
images for illustration purposes only



Suitable for Cables:

Not Applicable

PCB Layout Dimensions



Environmental Specification

Operating Temp: -40 to +155 Deg C.

IP Rating (Unmated): IP 68 - 2Hrs @ 1m

Electrical Specification

Impedance: 50 Ohm

Frequency: 0-12 GHz

Dielectric W/V: 750 Veff

Insulation res: 5000 M-Ohm

Mechanical Specification

Contact Retention: 18 N min

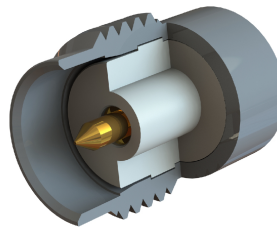
Cable Retention: Not Applicable

Mating cycles: 500

Weight: 4.04 g

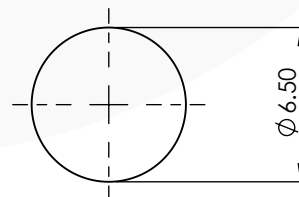
Connector Interface

image for illustration purposes only



Panel Cutout Dimensions

MAX. PANEL THICKNESS = 3.0 mm



7	O-RING	SILICONE	N/A
6	SEAL	EPOXY	N/A
5	WASHER	BERYLLIUM COPPER	GOLD
4	NUT	BRASS	GOLD
3	INSULATOR	PTFE	N/A
2	CENTRE CONTACT	BRASS	GOLD
1	BODY	BRASS	GOLD
ITEM	DESCRIPTION	MATERIAL	PLATING

A4	SHEET 1 OF 1	DIMENSIONS ARE IN MILLIMETRES		
REVISION :	A00	NAME	SIGNATURE	DATE
ISSUE :	1	DRAWN	G.E.	29/07/19
		CHK'D	I.G.	29/07/19
		APPV'D		
6-8 COLNE ROAD, TWICKENHAM, MIDDLESEX. TW1 4JR				
THE INFORMATION IS GIVEN AS AN INDICATION ONLY AND IS SUBJECT TO CHANGE WITHOUT NOTICE. IN THE CONTINUAL GOAL TO IMPROVE OUR PRODUCTS, WE RESERVE THE RIGHT TO MAKE ANY MODIFICATIONS NECESSARY WITHOUT PRIOR NOTICE.				