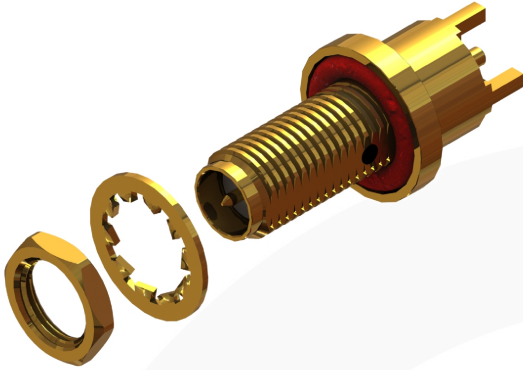
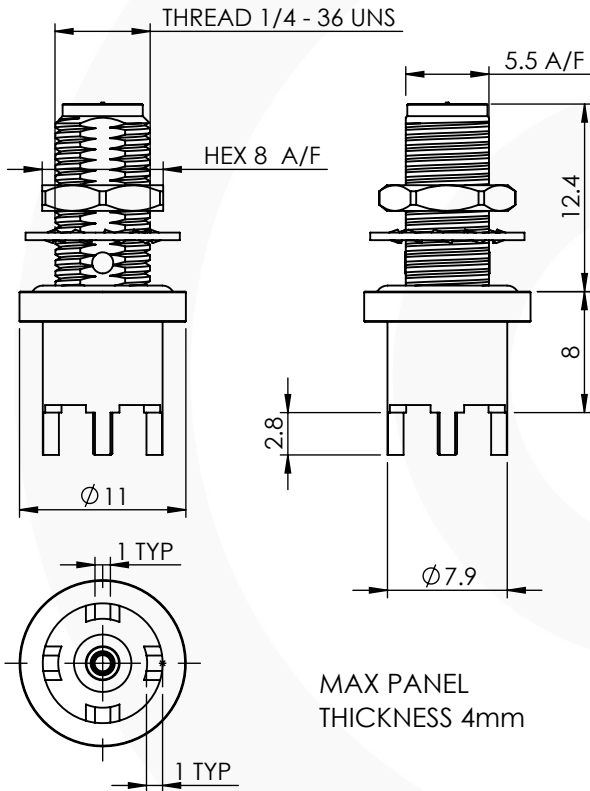


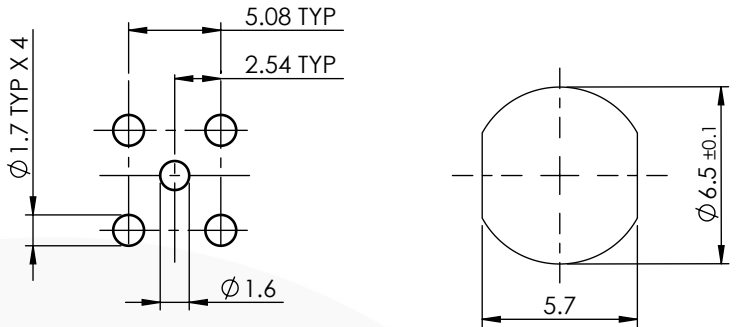
RP SMA VERTICAL IP68 BULKHEAD PCB JACK 31-455-1-D3



images for illustration purposes only



Recommended PCB & Mounting Layout



Tooling

Centre Contact: Solder Tool No: Not Applicable
 Crimp Sleeve: Not Applicable Tool No: Not Applicable
 Alignment Tool: Not Applicable Extraction: Not Applicable

Environmental Specification

Operating Temp: -40 to +155 Deg C.
 IP Rating (Unmated): IP 68 (2Hrs @1m)

Electrical Specification

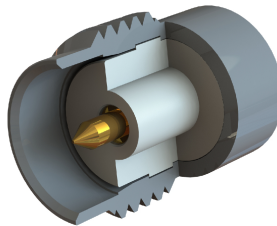
Impedance: 50 Ohm
 Frequency: 0-18 GHz
 Dielectric W/V: 750 Veff
 Insulation res: 5000 M-Ohm

Mechanical Specification

Contact Retention: 18 N min
 Cable Retention: Not Applicable
 Mating cycles: 500
 Weight: 5.44 g

Connector Interface

image for illustration purposes only



5	INTERNAL SEAL	BLACK EPOXY	N/A
4	O-RING	SILICONE	N/A
3	INSULATOR	PTFE	N/A
2	CENTRE CONTACT	BRASS	GOLD
1	BODY	BRASS	GOLD
ITEM	DESCRIPTION	MATERIAL	PLATING

A4	SHEET 1 OF 1	DIMENSIONS ARE IN MILLIMETRES		
REVISION :	A00	NAME	SIGNATURE	DATE
ISSUE :	1	DRAWN	G.E.	30/07/19
		CHK'D	I.G.	30/07/19
		APPV'D		
6-8 COLNE ROAD, TWICKENHAM, MIDDLESEX. TW1 4JR				
THE INFORMATION IS GIVEN AS AN INDICATION ONLY AND IS SUBJECT TO CHANGE WITHOUT NOTICE. IN THE CONTINUAL GOAL TO IMPROVE OUR PRODUCTS, WE RESERVE THE RIGHT TO MAKE ANY MODIFICATIONS NECESSARY WITHOUT PRIOR NOTICE.				