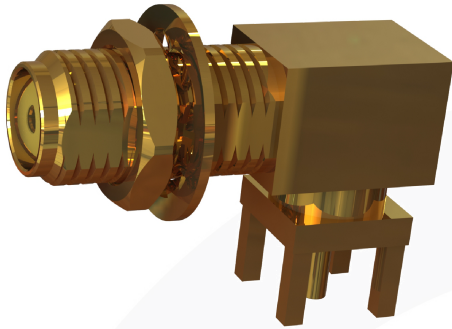
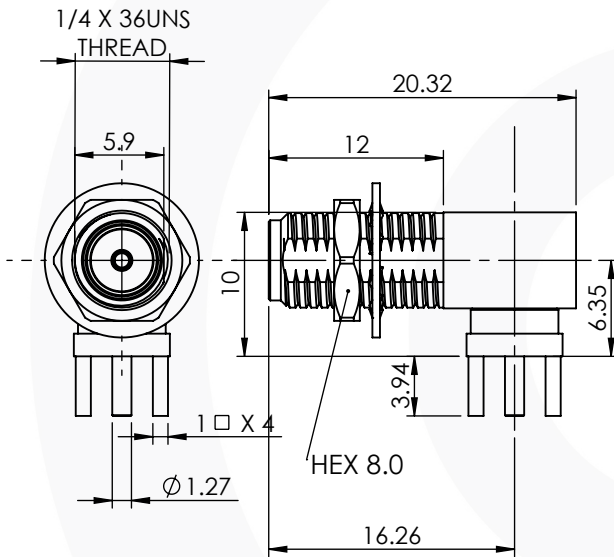


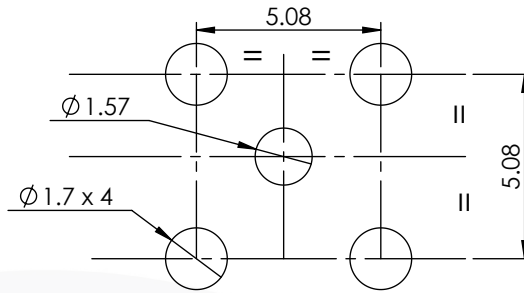
SMA RIGHT ANGLE BULKHEAD PCB JACK 30-468-D3



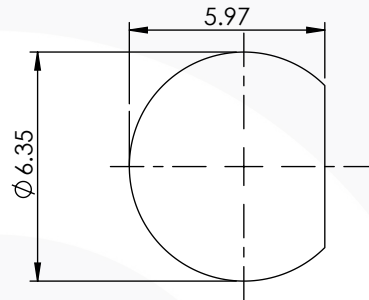
images for illustration purposes only



Recommended PCB Layout



Recommended Mounting Hole



Environmental Specification

Operating Temp: -55 to +155 Deg C.

IP Rating (Mated): IP 65

Electrical Specification

Impedance: 50 Ohm

Frequency: 0-18 GHz

Dielectric W/V: 1000 Veff

Insulation res: 5000 M-Ohm

Mechanical Specification

Contact Retention: 27 N min

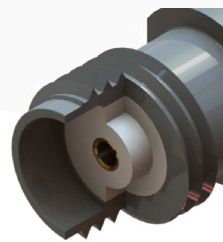
Cable Retention: N/A

Mating cycles: 100

Weight: 5.34 g

Connector Interface

image for illustration purposes only



Performance

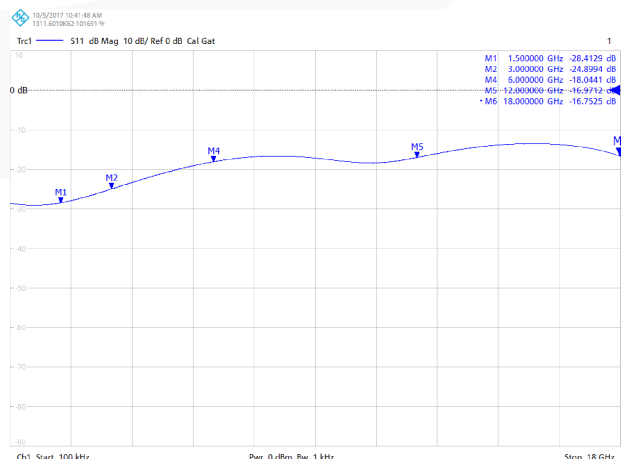
--28.4 dB @ 1.5 GHz

--24.9 dB @ 3.0 GHz

--18.0 dB @ 6.0 GHz

--16.9 dB @ 12.0 GHz

Return Loss Graph



5	WASHER	PHOSPHOR BRONZE	N/A
4	NUT	BRASS	GOLD
3	INSULATOR	PTFE	N/A
2	CENTRE CONTACT	BERYLLIUM COPPER	GOLD
1	BODY	BRASS	GOLD
ITEM	DESCRIPTION	MATERIAL	PLATING

A4	SHEET 1 OF 1	DIMENSIONS ARE IN MILLIMETRES		
REVISION :	A00	NAME	SIGNATURE	DATE
ISSUE :	0	DRAWN	IG	10/10/2017
		CHK'D	GE	11/10/2017
		APPV'D		
<p>6-8 COLNE ROAD, TWICKENHAM, MIDDLESEX. TW1 4JR</p> <p>THE INFORMATION IS GIVEN AS AN INDICATION ONLY AND IS SUBJECT TO CHANGE WITHOUT NOTICE. IN THE CONTINUAL GOAL TO IMPROVE OUR PRODUCTS, WE RESERVE THE RIGHT TO MAKE ANY MODIFICATIONS NECESSARY WITHOUT PRIOR NOTICE.</p>				