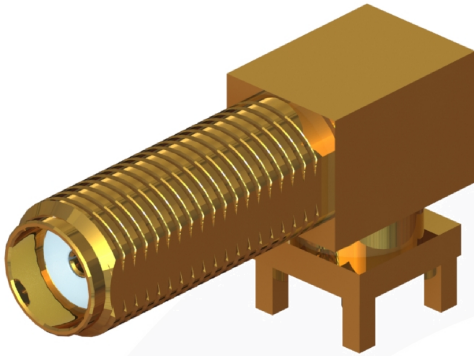
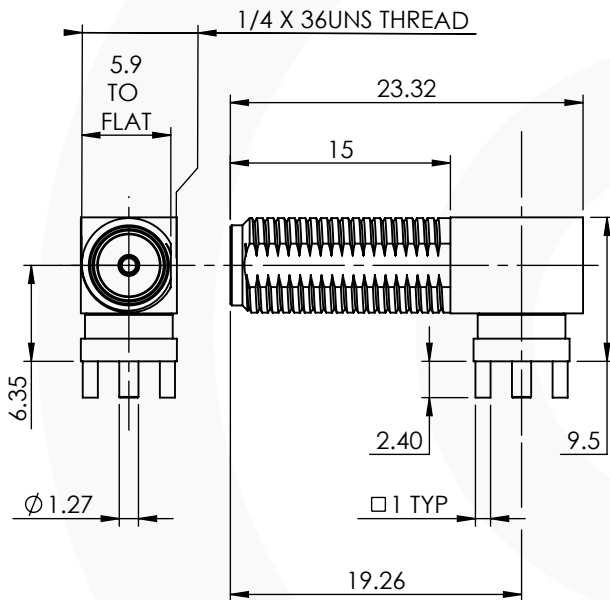


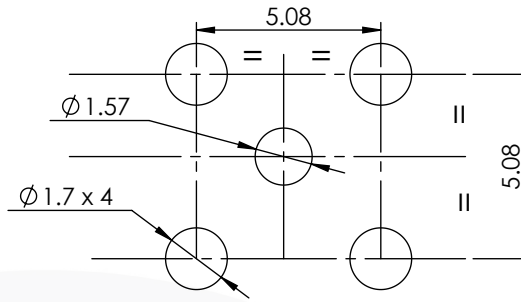
SMA RIGHT ANGLE BULKHEAD PCB JACK 30-468-D3-2.4



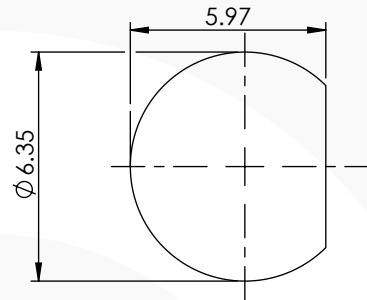
images for illustration purposes only



Recommended PCB Layout



Recommended Mounting Hole



Environmental Specification

Operating Temp: -55 to +155 Deg C.
IP Rating (Mated): IP 65

Electrical Specification

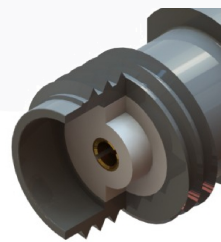
Impedance: 50 Ohm
Frequency: 0-18 GHz
Dielectric W/V: 1000 Veff
Insulation res: 5000 M-Ohm

Mechanical Specification

Contact Retention: 27 N min
Cable Retention: N/A
Mating cycles: 100
Weight: 5.25 g

Connector Interface

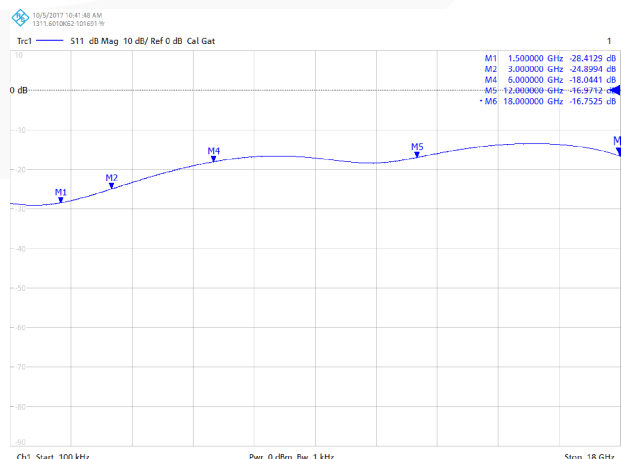
image for illustration purposes only



Performance

--28.4 dB @ 1.5 GHz
--24.9 dB @ 3.0 GHz
--18.0 dB @ 6.0 GHz
--16.9 dB @ 12.0 GHz

Return Loss Graph



3	INSULATOR	PTFE	N/A
2	CENTRE CONTACT	BERYLLIUM COPPER	GOLD
1	BODY	BRASS	GOLD
ITEM	DESCRIPTION	MATERIAL	PLATING
A4	SHEET 1 OF 1	DIMENSIONS ARE IN MILLIMETRES	
REVISION :	B00	NAME	SIGNATURE
ISSUE :	1	DATE	
6-8 COLNE ROAD, TWICKENHAM, MIDDLESEX. TW1 4JR		DRAWN	G.E.
		CHK'D	I.G.
		APPV'D	
THE INFORMATION IS GIVEN AS AN INDICATION ONLY AND IS SUBJECT TO CHANGE WITHOUT NOTICE. IN THE CONTINUAL GOAL TO IMPROVE OUR PRODUCTS, WE RESERVE THE RIGHT TO MAKE ANY MODIFICATIONS NECESSARY WITHOUT PRIOR NOTICE.			