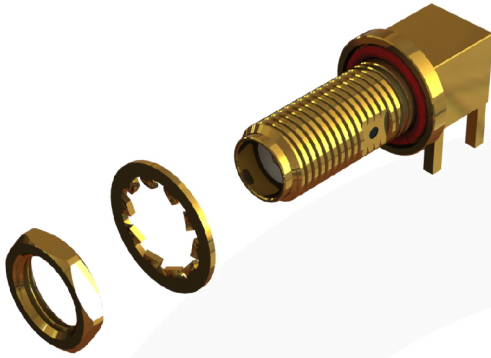
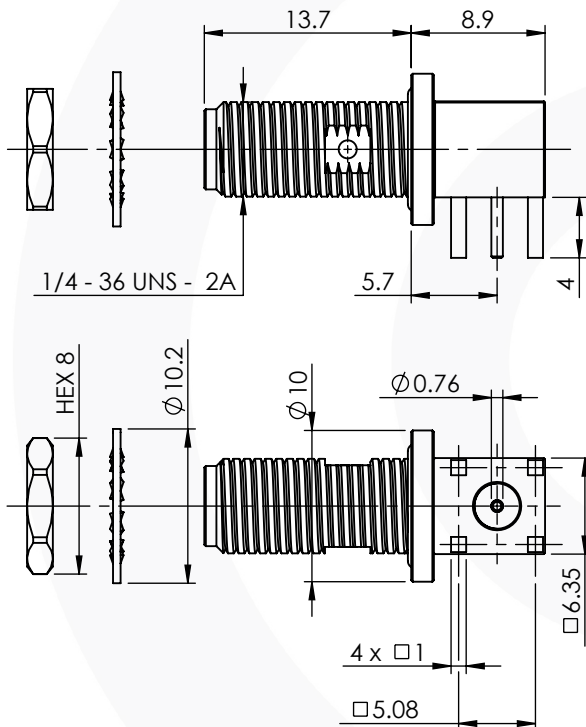


SMA RIGHT ANGLE IP68 BULKHEAD JACK

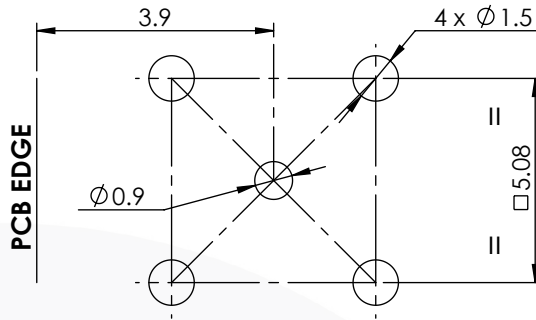
30-468-1-D3



images for illustration purposes only



Recommended PCB Hole:



Assembly Procedure:

Tooling

- Centre Contact: Solder Tool No: Solder
- Crimp Sleeve: Not Applicable Tool No: Not Applicable
- Alignment Tool: Not Applicable Extraction: Not Applicable

Environmental Specification

- Operating Temp: -40 to +155 Deg C.
- IP Rating (Mated): IP 68 - 2 Hrs @ 1m

Electrical Specification

- Impedance: 50 Ohm
- Frequency: 0-12 GHz
- Dielectric W/V: 750 Veff
- Insulation res: 5000 M-Ohm

Mechanical Specification

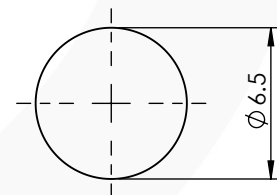
- Contact Retention: 18 N min
- Cable Retention: Not Applicable
- Mating cycles: 500
- Weight: 5.73 g

Connector Interface

image for illustration purposes only



Panel Cutout Dimensions



| ITEM | DESCRIPTION | MATERIAL | PLATING |
|------|----------------|------------------|---------|
| 6 | SEAL | EPOXY | N/A |
| 5 | WASHER | BERYLLIUM COPPER | GOLD |
| 4 | NUT | BRASS | GOLD |
| 3 | INSULATOR | PTFE | N/A |
| 2 | CENTRE CONTACT | BERYLLIUM COPPER | GOLD |
| 1 | BODY | BRASS | GOLD |

| A4 SHEET 1 OF 1 | | DIMENSIONS ARE IN MILLIMETRES | | |
|--|-----|-------------------------------|-----------|------------|
| REVISION : | A02 | NAME | SIGNATURE | DATE |
| ISSUE : | 1 | DRAWN | G.E. | 13/05/2016 |
| | | CHK'D | I.G. | 13/05/2016 |
| | | APPV'D | | |
| <p>6-8 COLNE ROAD, TWICKENHAM, MIDDLESEX, TW1 4JR</p> <p>THE INFORMATION IS GIVEN AS AN INDICATION ONLY AND IS SUBJECT TO CHANGE WITHOUT NOTICE. IN THE CONTINUAL GOAL TO IMPROVE OUR PRODUCTS, WE RESERVE THE RIGHT TO MAKE ANY MODIFICATIONS NECESSARY WITHOUT PRIOR NOTICE.</p> | | | | |