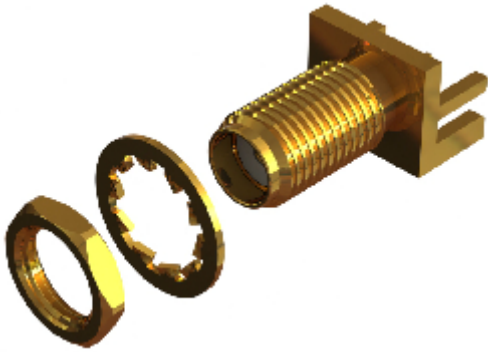
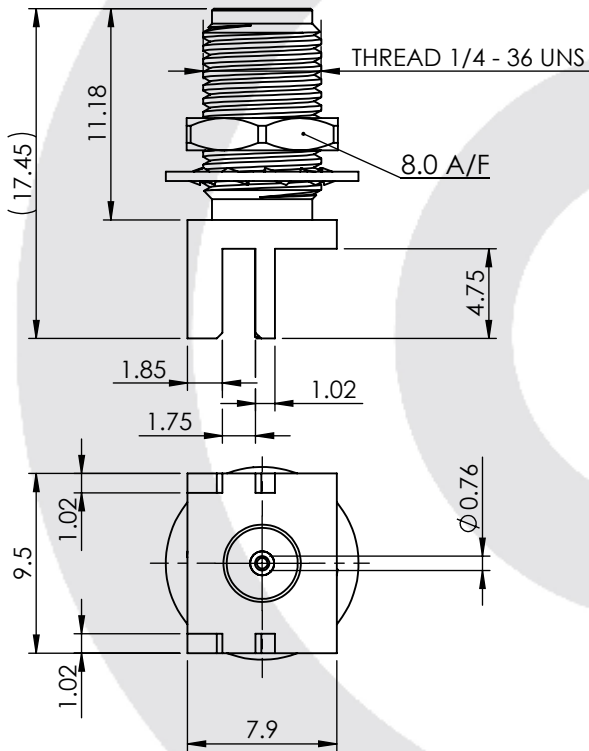


SMA BULKHEAD END LAUNCH JACK 30-462-D3-1.57



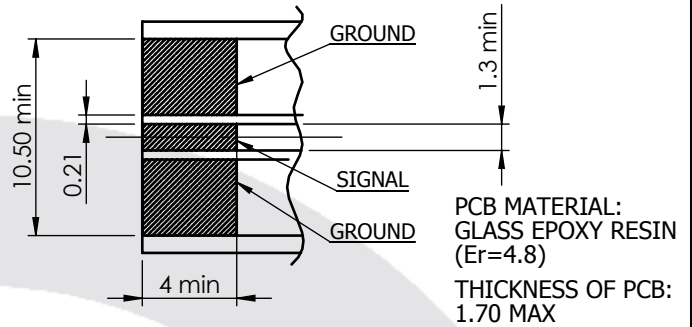
images for illustration purposes only



Suitable for Cables:

Not Applicable

PCB Layout Dimensions



Environmental Specification

Operating Temp: -55 to +155 Deg C.

IP Rating (Mated): IP 40

Electrical Specification

Impedance: 50 Ohm

Frequency: 0-18 GHz

Dielectric W/V: 750 Veff

Insulation res: 5000 M-Ohm

Mechanical Specification

Contact Retention: 18 N min

Cable Retention: Not Applicable

Mating cycles: 500

Weight: 3.21 g

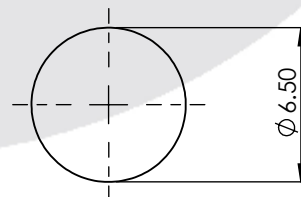
Connector Interface

image for illustration purposes only



Panel Cutout Dimensions

MAX. PANEL THICKNESS = 3.2 mm



ITEM	DESCRIPTION	MATERIAL	PLATING
5	WASHER	BERYLLIUM COPPER	GOLD
4	NUT	BRASS	GOLD
3	INSULATOR	PTFE	N/A
2	CENTRE CONTACT	BERYLLIUM COPPER	GOLD
1	BODY	BRASS	GOLD

A4 SHEET 1 OF 1		DIMENSIONS ARE IN MILLIMETRES		
REVISION :	B01	NAME	SIGNATURE	DATE
ISSUE :	1	DRAWN	GE	20/11/2014
		CHK'D	IG	20/11/2014
		APPV'D		

6-8 COLNE ROAD,
TWICKENHAM,
MIDDLESEX.
TW1 4JR

THE INFORMATION IS GIVEN AS AN INDICATION ONLY AND IS SUBJECT TO CHANGE WITHOUT NOTICE. IN THE CONTINUAL GOAL TO IMPROVE OUR PRODUCTS, WE RESERVE THE RIGHT TO MAKE ANY MODIFICATIONS NECESSARY WITHOUT PRIOR NOTICE.