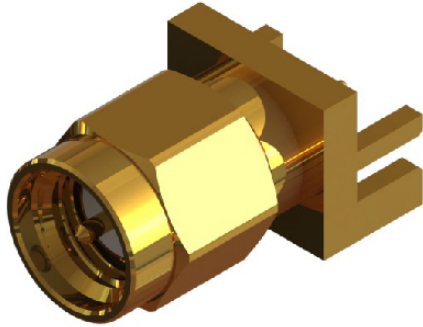
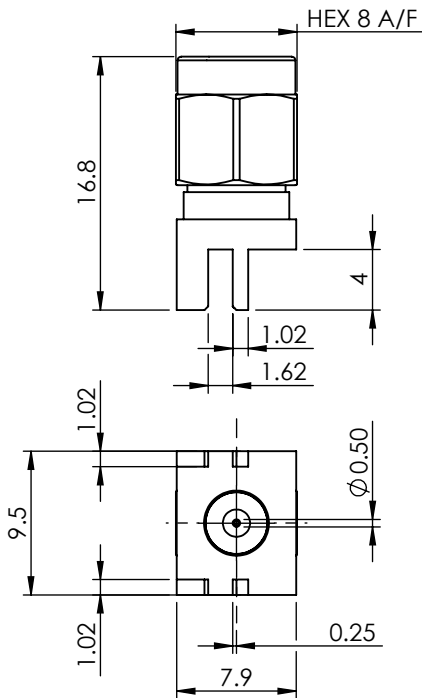


SMA STRAIGHT END LAUNCH PLUG

30-428-D3



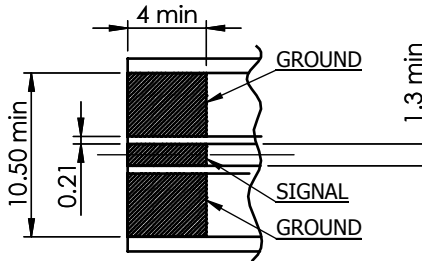
images for illustration purposes only



Suitable for Cables:

Not Applicable

PCB Layout Dimensions



THICKNESS OF PCB: 1.62 MAX

PCB MATERIAL: GLASS EPOXY RESIN (Er=4.8)

Assembly Procedure:

Not Applicable

Tooling

Centre Contact: Not Applicable Tool No: Not Applicable

Crimp Sleeve: Not Applicable Tool No: Not Applicable

Environmental Specification

Operating Temp: -55 to +155 Deg C.

IP Rating (Mated): IP 40

Electrical Specification

Impedance: 50 Ohm

Frequency: 0-12 GHz

Dielectric W/V: 750 Veff

Insulation res: 5000 M-Ohm

Mechanical Specification

Contact Retention: 18 N min

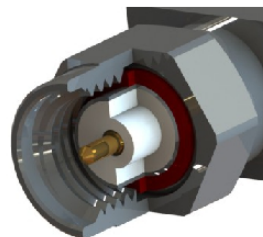
Cable Retention: Not Applicable

Mating cycles: 100

Weight: 4.07 g

Connector Interface

image for illustration purposes only



6	COUPLING NUT	BRASS	GOLD
5	GASKET	SILICONE	N/A
4	C-CLIP	STL. STEEL	N/A
3	INSULATOR	PTFE	N/A
2	CENTRE CONTACT	BRASS	GOLD
1	BODY	BRASS	GOLD
ITEM	DESCRIPTION	MATERIAL	PLATING

A4	SHEET 1 OF 1	DIMENSIONS ARE IN MILLIMETRES		
REVISION :	A00	NAME	SIGNATURE	DATE
ISSUE :	2	DRAWN	GE	05/09/2011
		CHK'D	IG	05/09/2011
		APPV'D		
6-8 COLNE ROAD, TWICKENHAM, MIDDLESEX. TW1 4JR				
THE INFORMATION IS GIVEN AS AN INDICATION ONLY AND IS SUBJECT TO CHANGE WITHOUT NOTICE. IN THE CONTINUAL GOAL TO IMPROVE OUR PRODUCTS, WE RESERVE THE RIGHT TO MAKE ANY MODIFICATIONS NECESSARY WITHOUT PRIOR NOTICE.				