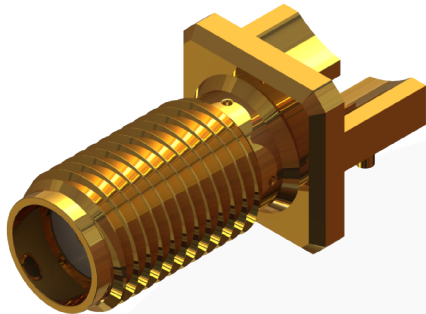
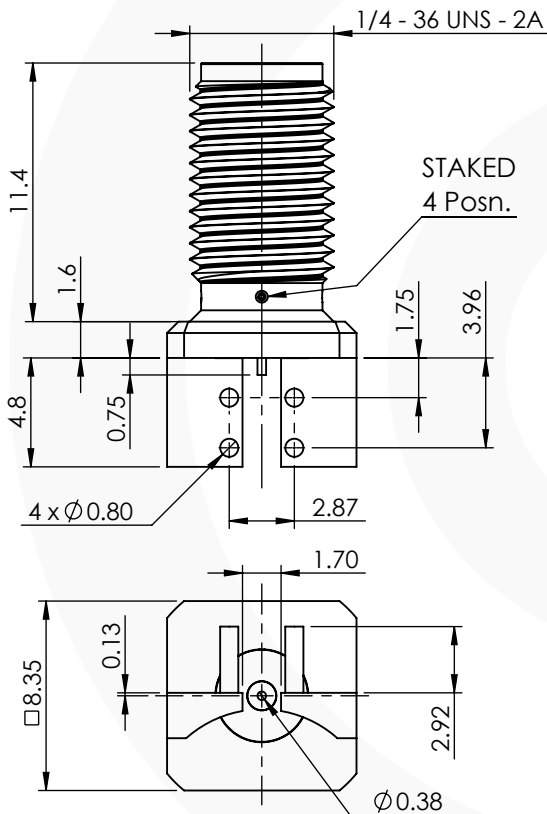


## SMA END LAUNCH JACK PCB MOUNT 30-410-1-D3

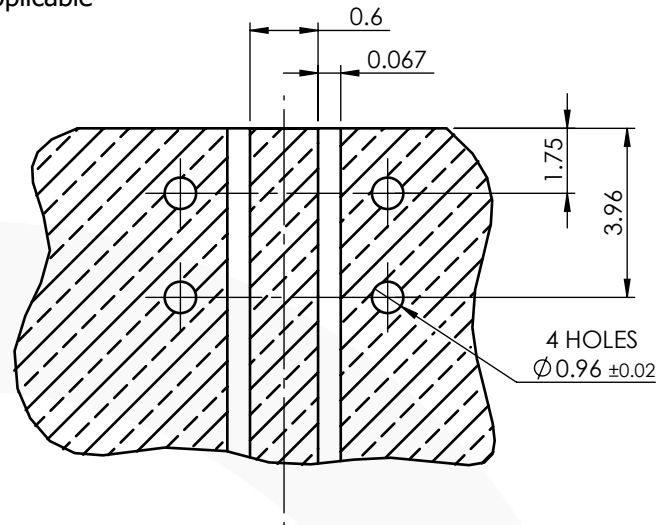


images for illustration purposes only



### PCB LAYOUT - NOT TO SCALE

Not Applicable



Based on Er = 4.2. PCB thickness = 1.6mm

### Environmental Specification

Operating Temp: -55 to +155 Deg C.  
IP Rating (Mated): NOT APPLICABLE

### Electrical Specification

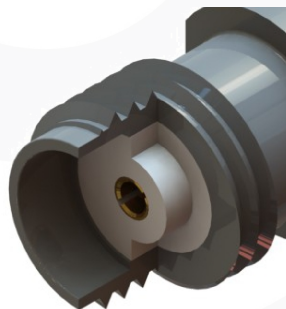
Impedance: 50 Ohm  
Frequency: 0-18 GHz  
Dielectric W/V: 750 Veff  
Insulation res: 5000 M-Ohm

### Mechanical Specification

Contact Retention: 18 N min  
Cable Retention: Not Applicable  
Mating cycles: 100  
Weight: 2.70 g

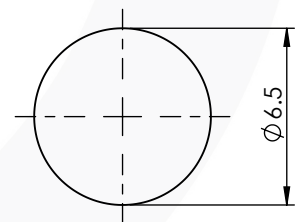
### Connector Interface

image for illustration purposes only



### Panel Cutout Dimensions

MAX. PANEL THICKNESS = 3.2 mm



3	INSULATOR	PTFE	N/A
2	CENTRE CONTACT	BeCu	GOLD
1	BODY	BRASS	GOLD
ITEM	DESCRIPTION	MATERIAL	PLATING

<b>A4</b>	SHEET 1 OF 1	DIMENSIONS ARE IN MILLIMETRES		
REVISION :	E00	NAME	SIGNATURE	DATE
ISSUE :	1	DRAWN	GE	27/07/15
		CHK'D	IG	27/07/15
		APPV'D		
6-8 COLNE ROAD, TWICKENHAM, MIDDLESEX. TW1 4JR				
THE INFORMATION IS GIVEN AS AN INDICATION ONLY AND IS SUBJECT TO CHANGE WITHOUT NOTICE. IN THE CONTINUAL GOAL TO IMPROVE OUR PRODUCTS, WE RESERVE THE RIGHT TO MAKE ANY MODIFICATIONS NECESSARY WITHOUT PRIOR NOTICE.				