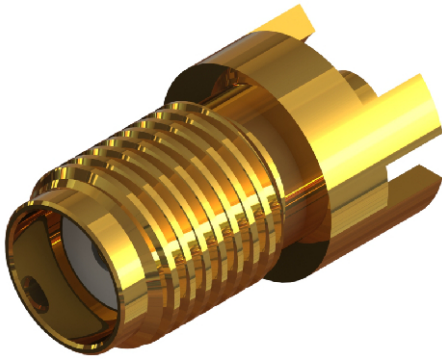
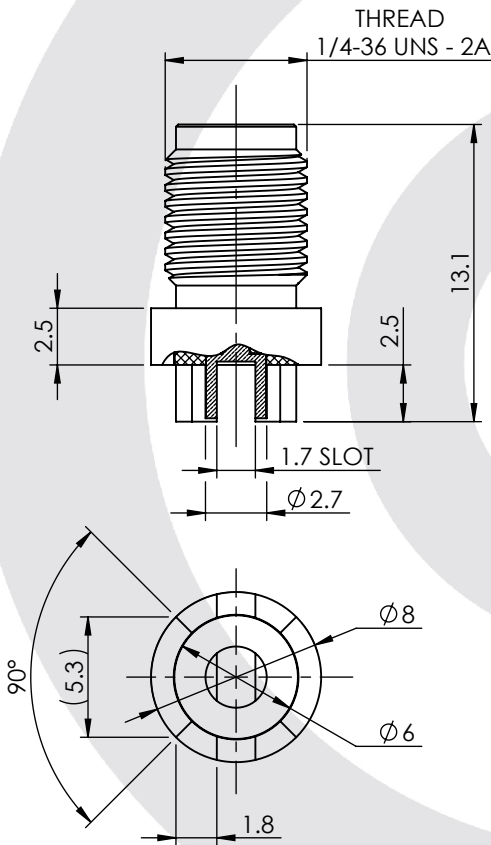


SMA END LAUNCH PCB JACK

30-390-D3-1.57



images for illustration purposes only



Environmental Specification

Operating Temp: -55 to +155 Deg C.

IP Rating (Mated): IP 40

Electrical Specification

Impedance: 50 Ohm

Frequency: 0-18 GHz

Dielectric W/V: 1000 Veff

Insulation res: 5000 M-Ohm

Mechanical Specification

Contact Retention: 27 N min

Cable Retention: Not Applicable

Mating cycles: 250

Weight: 1.89 g

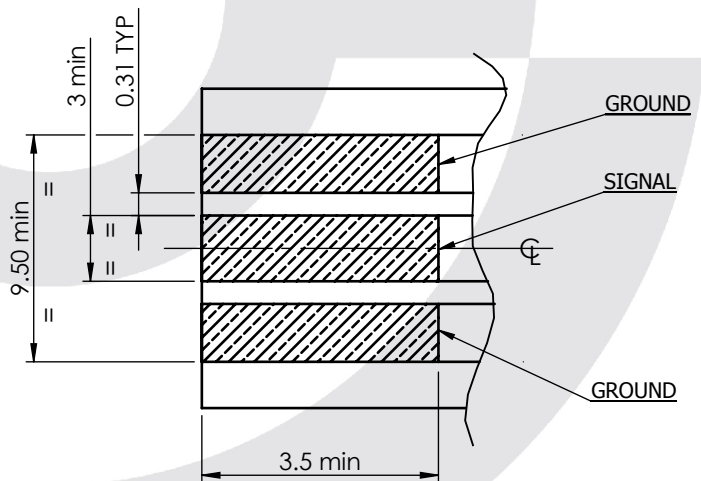
Connector Interface

image for illustration purposes only



Coplaner PCB Layout

Based on; Er = 4.50, Thickness = 1.57



| 3 | INSULATOR | PTFE | N/A |
|--|----------------|-------------------------------|-----------|
| 2 | CENTRE CONTACT | BERYLLIUM COPPER | GOLD |
| 1 | BODY | BRASS | GOLD |
| ITEM | DESCRIPTION | MATERIAL | PLATING |
| A4 | SHEET 1 OF 1 | DIMENSIONS ARE IN MILLIMETRES | |
| REVISION : | A00 | NAME | SIGNATURE |
| ISSUE : | 2 | DATE | |
| | | DRAWN | GE |
| | | CHK'D | IG |
| | | APPV'D | |
| <p>6-8 COLNE ROAD, TWICKENHAM, MIDDLESEX. TW1 4JR</p> <p>THE INFORMATION IS GIVEN AS AN INDICATION ONLY AND IS SUBJECT TO CHANGE WITHOUT NOTICE. IN THE CONTINUAL GOAL TO IMPROVE OUR PRODUCTS, WE RESERVE THE RIGHT TO MAKE ANY MODIFICATIONS NECESSARY WITHOUT PRIOR NOTICE.</p> | | | |