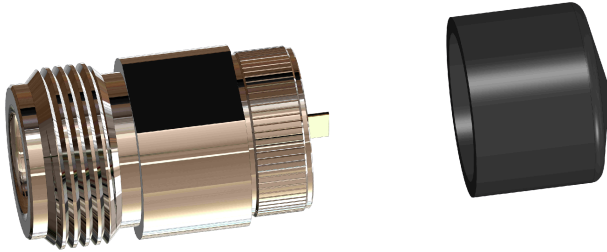
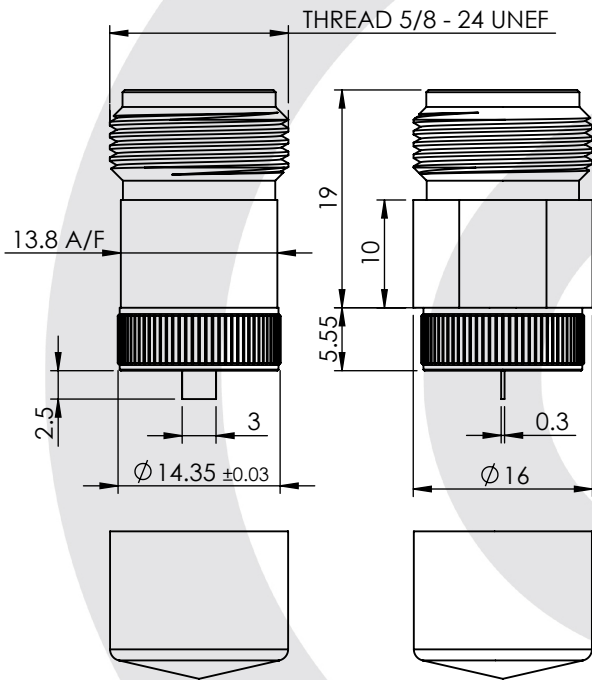


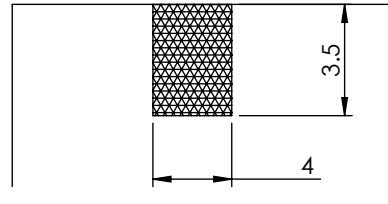
## N Type Push - Fit Jack 25-071-B3-19



images for illustration purposes only



### Recommended PCB Layout



### Environmental Specification

Operating Temp: -55 to +105 Deg C

IP Rating (Mated): IP 65

### Electrical Specification

Impedance: 50 Ohm

Frequency: 0 - 11 GHz

Dielectric W/V: 1500 Veff

Insulation res: 5000 M-Ohm

### Mechanical Specification

Contact Retention: 27N

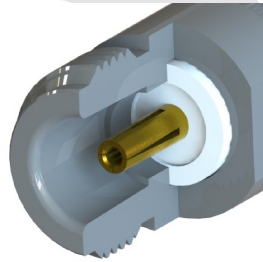
Cable Retention: N/A

Mating cycles: 250

Weight: 26.37 g

### Connector Interface

image for illustration purposes only



4	PROTECTIVE CAP	PVC	N/A
3	INSULATOR	PTFE	N/A
2	CENTRE CONTACT	PHOSPHOR BRONZE	GOLD
1	BODY	BRASS	NICKEL
ITEM	DESCRIPTION	MATERIAL	PLATING

<b>A4</b>	SHEET 1 OF 1	DIMENSIONS ARE IN MILLIMETRES		
REVISION :	A01	NAME	SIGNATURE	DATE
ISSUE :	0	DRAWN	IG	10/05/2011
		CHK'D	GE	10/05/2011
		APPV'D		
<p>6-8 COLNE ROAD, TWICKENHAM, MIDDLESEX, TW1 4JR</p> <p>THE INFORMATION IS GIVEN AS AN INDICATION ONLY AND IS SUBJECT TO CHANGE WITHOUT NOTICE. IN THE CONTINUAL GOAL TO IMPROVE OUR PRODUCTS, WE RESERVE THE RIGHT TO MAKE ANY MODIFICATIONS NECESSARY WITHOUT PRIOR NOTICE.</p>				