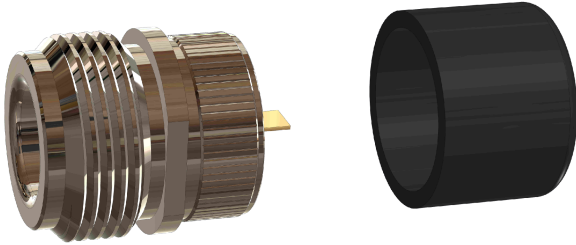
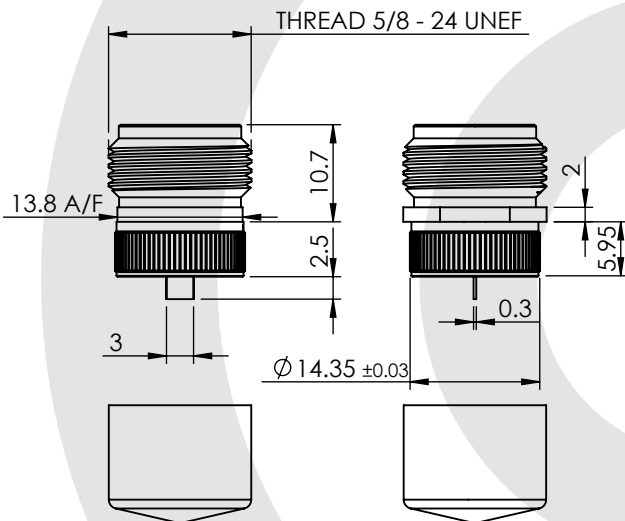


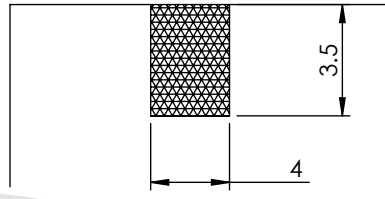
N Type Push - Fit Jack 25-071-B3-10.7



images for illustration purposes only



Recommended PCB Layout



Environmental Specification

Operating Temp: -55 to +105 Deg C
IP Rating (Mated): IP 65

Electrical Specification

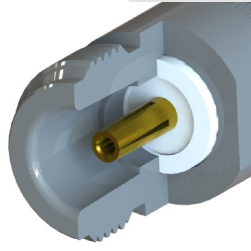
Impedance: 50 Ohm
Frequency: 0 - 11 GHz GHz
Dielectric W/V: 1500 Veff
Insulation res: 5000 M-Ohm

Mechanical Specification

Contact Retention: 27N
Cable Retention: N/A
Mating cycles: 500
Weight: 17.23 g

Connector Interface

image for illustration purposes only



4	PROTECTIVE CAP	PVC	N/A
3	INSULATOR	PTFE	N/A
2	CENTRE CONTACT	PHOSPHOR BRONZE	GOLD
1	BODY	BRASS	NICKEL
ITEM	DESCRIPTION	MATERIAL	PLATING

A4	SHEET 1 OF 1	DIMENSIONS ARE IN MILLIMETRES		
REVISION :	A00	NAME	SIGNATURE	DATE
ISSUE :	0	DRAWN	IG	06/08/2014
		CHK'D	GE	07/08/2014
		APPV'D		
6-8 COLNE ROAD, TWICKENHAM, MIDDLESEX. TW1 4JR				
THE INFORMATION IS GIVEN AS AN INDICATION ONLY AND IS SUBJECT TO CHANGE WITHOUT NOTICE. IN THE CONTINUAL GOAL TO IMPROVE OUR PRODUCTS, WE RESERVE THE RIGHT TO MAKE ANY MODIFICATIONS NECESSARY WITHOUT PRIOR NOTICE.				