

Assembly Procedure

WEBSITE
VIDEO No.

1.

- Place Nut, Washer and Clamp sleeve over cable.
- Trim cable to dimensions shown.
- Ensure centre conductor is not damaged.
- Tin centre conductor.



2.

- Slide the Braid Retainer over cable dielectric. Note orientation.
- Fan braid out Over clamp and trim off surplus.



3.

- Place contact on Tinned centre conductor.
- Ensure centre conductor is visible in the inspection hole in centre contact.
- Heat centre contact so that the solder melts, adding additional as required.
- Care should be taken not to overheat the contact. Allow to cool.



4.

- Carefully place contact sub-assembly into Connector body
- Ensure contact is seated in place in front insulator.
- Slide Clamp sleeve and Washer forward up to rear of Braid Retainer.
- Slide Nut forward and engage thread.
- Using a suitable spanner to hold the Connector body Tighten nut to clamp cable.
- Check assembly.



Electrical Specification

Impedance: 50 Ohm
 Frequency: TBA
 Dielectric W/V: 2500 V eff min
 Insulation res: 5000 M-Ohm min

Mechanical Specification

Centre contact retention
 Axial Force: TBA
 Cable Retention: TBA
 Mating cycles: 500

Environmental Specification

Operating Temp: -55 to +155 Deg C

Tooling

Centre Contact: SOLDER
 COAX Tool No: N/A
 Crimp Sleeve: N/A
 COAX Tool No: N/A

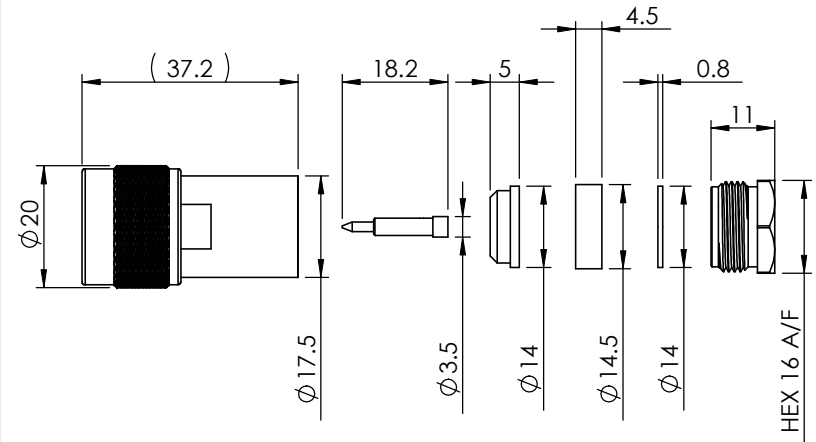


DO NOT SCALE DRAWING

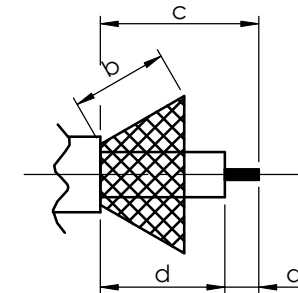


DATA SHEET

SHEET 1 OF 1



STRIPPING DIMENSIONS



a = 3.5mm
 b = 6.0mm
 c = 6.0mm
 d = 2.5mm

9	CENTRE CONTACT	BRASS	GOLD
8	NUT	BRASS	NICKEL
7	OUTER CONTACT	BRASS	NICKEL
6	CABLE CLAMP	SILICONE	N/A
5	BRAID CLAMP	BRASS	NICKEL
4	INSULATOR	PTFE	N/A
3	INNER RETAINING RING	SK5	N/A
2	GASKET	SILICONE	N/A
1	BODY, COUPLING NUT & WASHER	BRASS	NICKEL
ITEM	DESCRIPTION	MATERIAL	PLATING



COAX CONNECTORS LTD
 6-8 COLNE ROAD, TWICKENHAM,
 MIDDLESEX. TW1 4JR

Description N TYPE CLAMP PLUG RG213

Part Number 25-002-B3-AN

REVISION A00

ISSUE : 2

A4

DIMENSIONS ARE IN MILLIMETRES

NAME	SIGNATURE	DATE
DRAWN	GE	25/02/2010
CHK'D	DC	25/02/2010
APPV'D		

THE INFORMATION IS GIVEN AS AN INDICATION ONLY AND IS SUBJECT TO CHANGE WITHOUT NOTICE. IN THE CONTINUAL GOAL TO IMPROVE OUR PRODUCTS, WE RESERVE THE RIGHT TO MAKE ANY MODIFICATIONS NECESSARY WITHOUT PRIOR NOTICE.