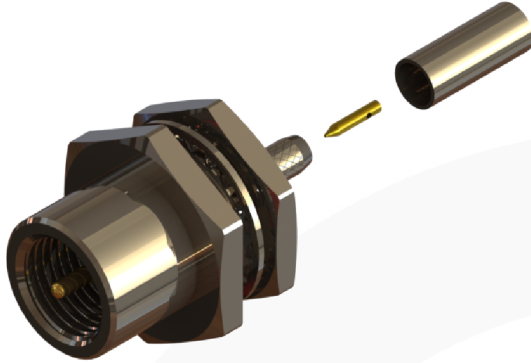
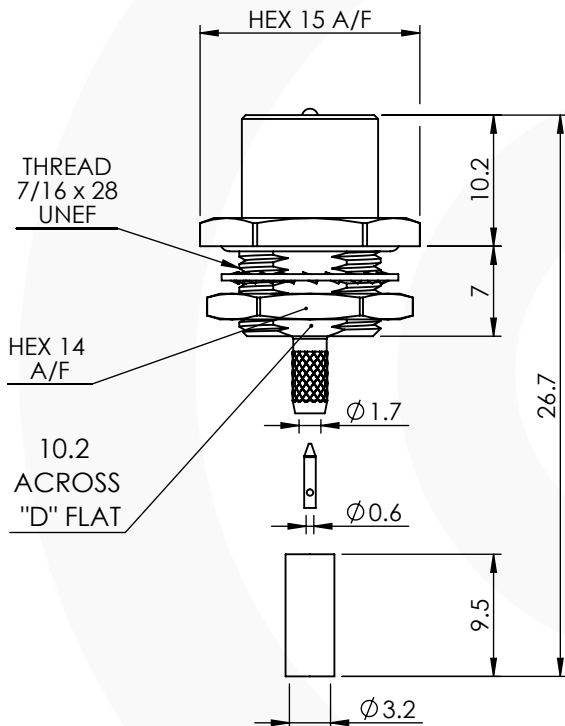


## FME FRONT MOUNT IP68 BULKHEAD CRIMP PLUG 22-214-B3-AD-IP68



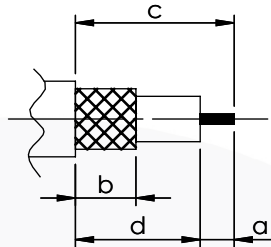
images for illustration purposes only



### Suitable for Cables:

(AD) RG316, RG174, RG188, LMR100, WBC100, URM95, KX3, KX22

### Stripping Dimensions



a = 2.8 mm  
b = 6.2 mm  
c = 11.3 mm  
d = 8.5 mm

\* CUT FOIL TO DIM. "b"

### Assembly Procedure:

#### Tooling

Centre Contact: SQ 0.71mm A/F or SOLDER

Tool No: 336T1 or SOLDER

Crimp Sleeve: Hex 3.25mm A/F

Tool No: 336T1

### Environmental Specification

Operating Temp: -55 to +155 Deg C.

IP Rating (Mated): IP 68

### Electrical Specification

Impedance: 50 Ohm

Frequency: 0-2 GHz

Dielectric W/V: 1000 Veff

Insulation res: 5000 M-Ohm

### Mechanical Specification

Contact Retention: 18 N min

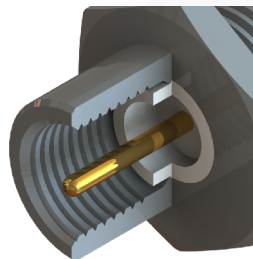
Cable Retention: 85 N min

Mating cycles: 500

Weight: 12.40 g

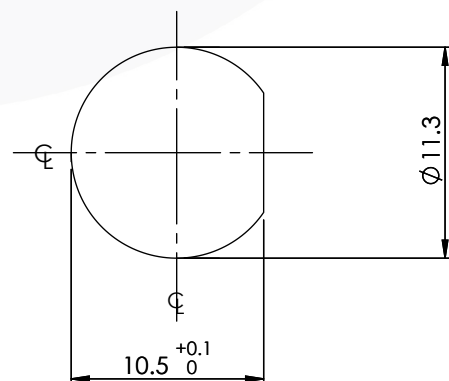
### Connector Interface

image for illustration purposes only




### Recommended Mounting

MAXIMUM PANEL THICKNESS: 4.0mm



6	SPRING WASHER	BRASS	NICKEL
5	BULLET CONTACT	BRASS	GOLD
4	O - RINGS	SILICONE	N/A
3	INSULATORS	PTFE	N/A
2	CENTRE CONTACT	BERYLLIUM COPPER	GOLD
1	BODY & NUT	BRASS	NICKEL
ITEM	DESCRIPTION	MATERIAL	PLATING

<b>A4</b>	SHEET 1 OF 1	 DIMENSIONS ARE IN MILLIMETRES		
REVISION :	A01	NAME	SIGNATURE	DATE
ISSUE :	1	DRAWN	G.E.	31/05/2019
		CHK'D	P.P.	31/05/2019
		APPV'D		
6-8 COLNE ROAD, TWICKENHAM, MIDDLESEX. TW1 4JR				
THE INFORMATION IS GIVEN AS AN INDICATION ONLY AND IS SUBJECT TO CHANGE WITHOUT NOTICE. IN THE CONTINUAL GOAL TO IMPROVE OUR PRODUCTS, WE RESERVE THE RIGHT TO MAKE ANY MODIFICATIONS NECESSARY WITHOUT PRIOR NOTICE.				