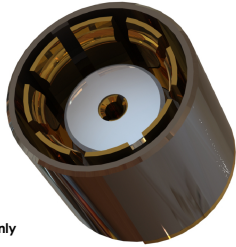
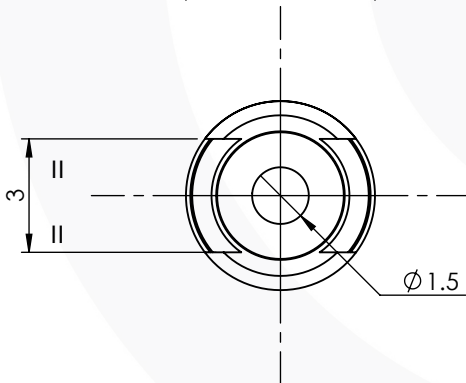
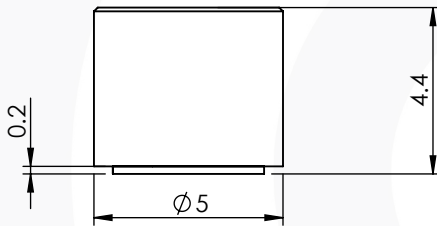
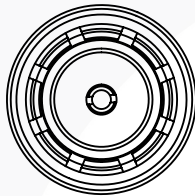


## MINIATURE SURFACE MOUNT PCB JACK 50 Ohm

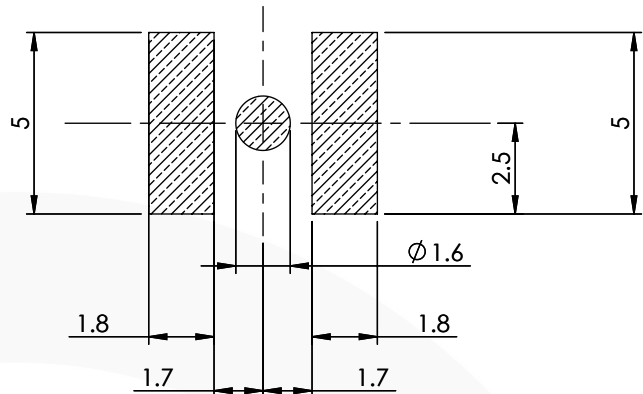
### 18-483-D3



images for illustration purposes only



### PCB Footprint



### Environmental Specification

Operating Temp: -55 to +155 Deg C.

IP Rating (Mated): IP30

### Electrical Specification Mechanical Specification

Impedance: 50 Ohm

Contact Retention: 5 N min

Frequency: 0-4 GHz

Cable Retention: N/A

Dielectric W/V: 400 Veff

Mating cycles: 250

Insulation res: 1000 M-Ohm

Weight: 0.44 g

### Connector Interface

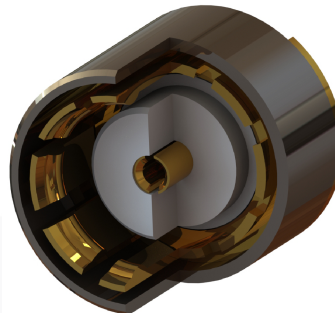


image for illustration purposes only

### NOTE :

WHEN MATED WITH 18-403-D3 TOTAL BOARD TO BOARD HEIGHT IS 5.0mm

| 4    | OUTER CONTACT  | PHOS. BRONZE | GOLD    |
|------|----------------|--------------|---------|
| 3    | INSULATOR      | PTFE         | N/A     |
| 2    | CENTRE CONTACT | BeCu         | GOLD    |
| 1    | BODY           | BRASS        | NICKEL  |
| ITEM | DESCRIPTION    | MATERIAL     | PLATING |

|  |              |                               |        |           |            |
|--|--------------|-------------------------------|--------|-----------|------------|
| <b>A4</b>  | SHEET 1 OF 1 | DIMENSIONS ARE IN MILLIMETRES |        |           |            |
| REVISION :   | A00          |                               | NAME   | SIGNATURE | DATE       |
| DRAWN :  | 1            |                               | IG     |           | 11/10/2018 |
| ISSUE :  | 1            |                               | CHK'D  | GE        | 12/10/2018 |
|  |              |                               | APPV'D |           |            |
| <p>6-8 COLNE ROAD,<br/>TWICKENHAM,<br/>MIDDLESEX.<br/>TW1 4JR</p> <p>THE INFORMATION IS GIVEN AS AN INDICATION ONLY AND IS SUBJECT TO CHANGE WITHOUT NOTICE. IN THE CONTINUAL GOAL TO IMPROVE OUR PRODUCTS, WE RESERVE THE RIGHT TO MAKE ANY MODIFICATIONS NECESSARY WITHOUT PRIOR NOTICE.</p> |              |                               |        |           |            |