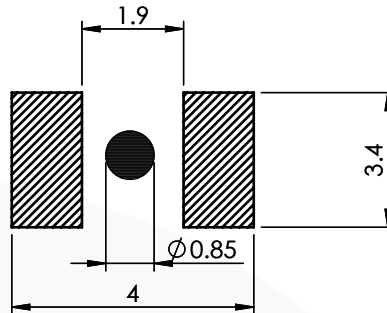


MINIATURE SURFACE MOUNT PCB PLUG 50 Ohm 18-403-D3



images for illustration purposes only

PCB FOOTPRINT



Environmental Specification

Operating Temp: -55 to +155 Deg C.

IP Rating (Mated): IP30

Electrical Specification Mechanical Specification

Impedance: 50 Ohm

Contact Retention: 5 N min

Frequency: 0-4 GHz

Cable Retention: N/A

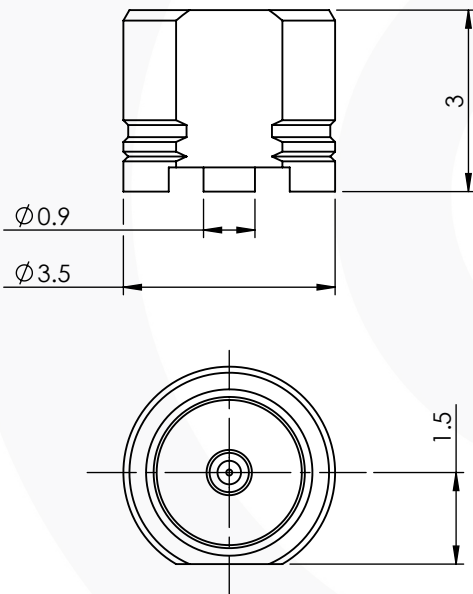
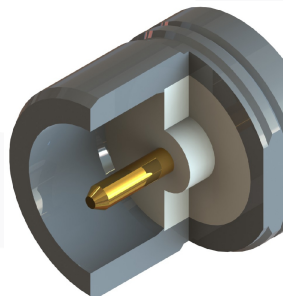
Dielectric W/V: 400 Veff

Mating cycles: 250

Insulation res: 1000 M-Ohm Weight: 0.14 g

Connector Interface

image for illustration purposes only



3	INSULATOR	PTFE	N/A
2	CENTRE CONTACT	PHOS. BRONZE	GOLD
1	BODY	BRASS	GOLD
ITEM	DESCRIPTION	MATERIAL	PLATING

A4	SHEET 1 OF 1	DIMENSIONS ARE IN MILLIMETRES				
REVISION :	A00		NAME	SIGNATURE	DATE	
DRAWN	IG				11/10/2018	
ISSUE :	1		CHK'D	GE		12/10/2018
			APPV'D			
<p>6-8 COLNE ROAD, TWICKENHAM, MIDDLESEX. TW1 4JR</p> <p>THE INFORMATION IS GIVEN AS AN INDICATION ONLY AND IS SUBJECT TO CHANGE WITHOUT NOTICE. IN THE CONTINUAL GOAL TO IMPROVE OUR PRODUCTS, WE RESERVE THE RIGHT TO MAKE ANY MODIFICATIONS NECESSARY WITHOUT PRIOR NOTICE.</p>						