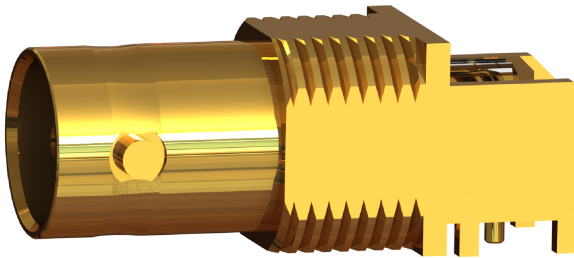
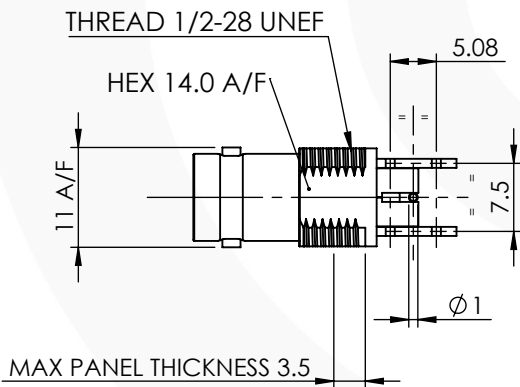
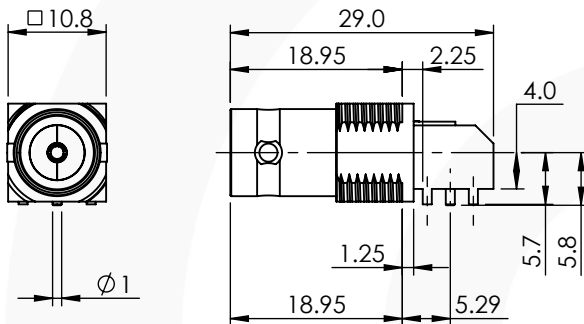


BNC RIGHT ANGLE PCB BULKHEAD JACK

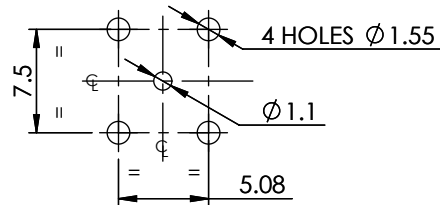
10-470-1-XD36



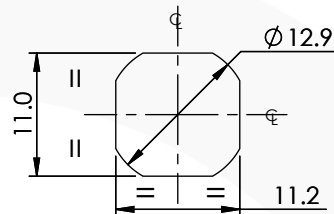
images for illustration purposes only



RECOMMENDED PCB HOLE LAYOUT



RECOMMENDED BULKHEAD HOLE



Environmental Specification

Operating Temp: -10 to +155 Deg C.

IP Rating (Mated): NONE

Electrical Specification

Impedance: 75 Ohm

Frequency: 0-3 GHz

Dielectric W/V: 1500 Veff

Insulation res: 5000 M-Ohm

Mechanical Specification

Contact Retention: 10 N min

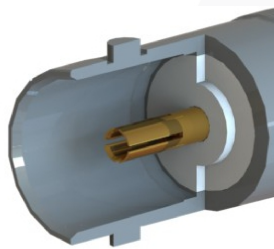
Cable Retention: Not Applicable

Mating cycles: 500

Weight: 10.00 g

Connector Interface

image for illustration purposes only



| 3 | INSULATOR | TPX | N/A |
|------|----------------|-----------------|---------|
| 2 | CENTRE CONTACT | PHOSPHOR BRONZE | GOLD |
| 1 | BODY | BRASS | GOLD |
| ITEM | DESCRIPTION | MATERIAL | PLATING |

| | | | | |
|---|--------------|-------------------------------|-----------|------------|
| A4 | SHEET 1 OF 1 | DIMENSIONS ARE IN MILLIMETRES | | |
| REVISION : | A00 | NAME | SIGNATURE | DATE |
| ISSUE : | 1 | DRAWN | I.G. | 14/11/2017 |
| | | CHK'D | G.E. | 15/11/2017 |
| | | APPV'D | | |
| 6-8 COLNE ROAD, TWICKENHAM, MIDDLESEX. TW1 4JR | | | | |
| THE INFORMATION IS GIVEN AS AN INDICATION ONLY AND IS SUBJECT TO CHANGE WITHOUT NOTICE. IN THE CONTINUAL GOAL TO IMPROVE OUR PRODUCTS, WE RESERVE THE RIGHT TO MAKE ANY MODIFICATIONS NECESSARY WITHOUT PRIOR NOTICE. | | | | |