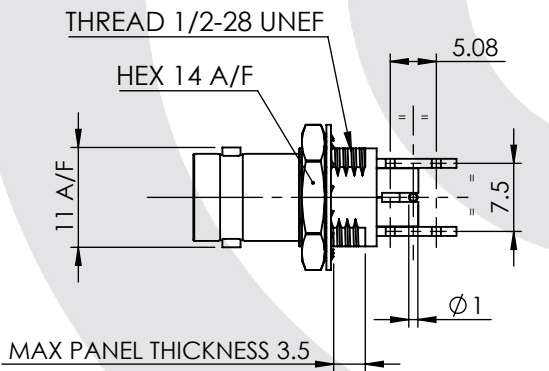
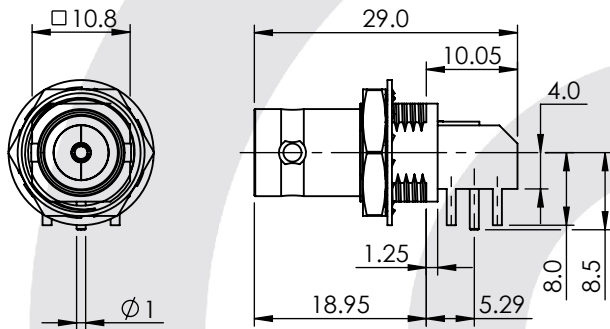


BNC RIGHT ANGLED PCB BULKHEAD JACK WITH LIGHTPIPE INSULATOR

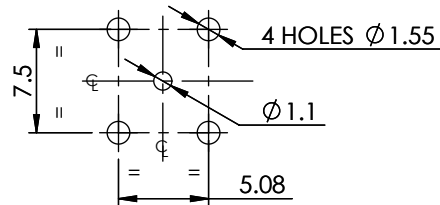
10-470-1-X36



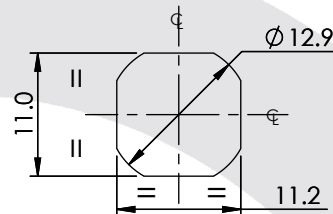
images for illustration purposes only



RECOMMENDED PCB HOLE LAYOUT



RECOMMENDED BULKHEAD HOLE



Environmental Specification

Operating Temp: -10 to +155 Deg C.

IP Rating (Mated): NONE

Electrical Specification

Impedance: 75 Ohm

Frequency: 0-3 GHz

Dielectric W/V: 1500 Veff

Insulation res: 5000 M-Ohm

Mechanical Specification

Contact Retention: 10 N min

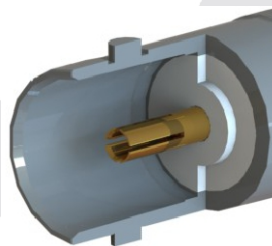
Cable Retention: Not Applicable

Mating cycles: 250

Weight: 11.62 g

Connector Interface

image for illustration purposes only



5	WASHER	BERYLLIUM COPPER	NICKEL
4	NUT	BRASS	NICKEL
3	INSULATOR	TPX	N/A
2	CENTRE CONTACT	PHOSPHOR BRONZE	GOLD
1	BODY	BRASS	NICKEL
ITEM	DESCRIPTION	MATERIAL	PLATING

A4	SHEET 1 OF 1	DIMENSIONS ARE IN MILLIMETRES				
REVISION :	A01		NAME	SIGNATURE	DATE	
DRAWN	GE				31/03/2014	
ISSUE :	1		CHK'D	IG		31/03/2014
			APPV'D			
6-8 COLNE ROAD, TWICKENHAM, MIDDLESEX, TW1 4JR						
<small>THE INFORMATION IS GIVEN AS AN INDICATION ONLY AND IS SUBJECT TO CHANGE WITHOUT NOTICE. IN THE CONTINUAL GOAL TO IMPROVE OUR PRODUCTS, WE RESERVE THE RIGHT TO MAKE ANY MODIFICATIONS NECESSARY WITHOUT PRIOR NOTICE.</small>						