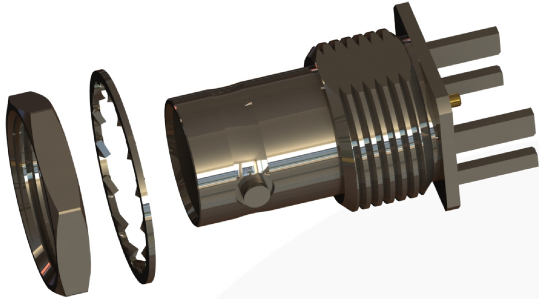
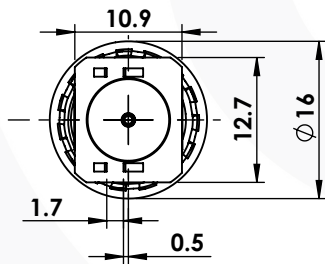
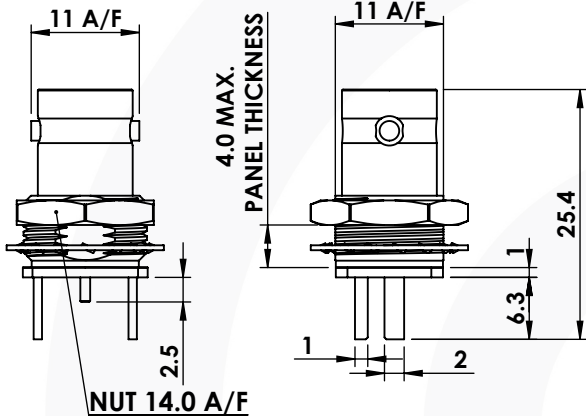


BNC END LAUNCH BULKHEAD JACK

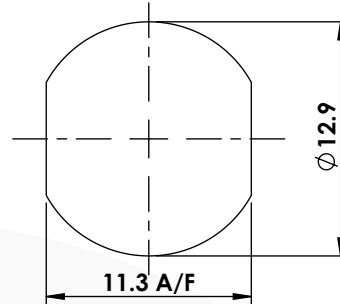
10-462-B36



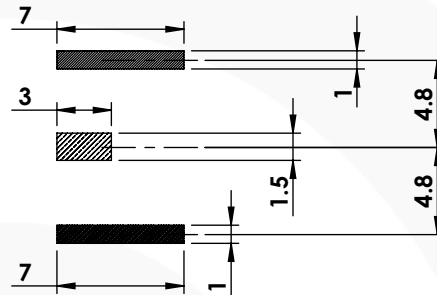
images for illustration purposes only



Recommended Mounting Hole



Recommended PCB Layout



Environmental Specification

Operating Temp: -55 to +155 Deg C.

IP Rating (Mated):

IP64

Electrical Specification

Impedance: 75 Ohm

Frequency: 0-3 GHz

Dielectric W/V: 1500 Veff

Insulation res: 5000 M-Ohm

Mechanical Specification

Contact Retention: 27 N min

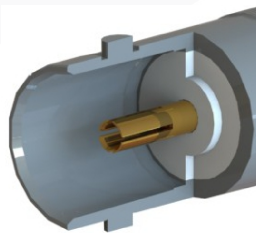
Cable Retention: N/A

Mating cycles: 250

Weight: 12.02 g

Connector Interface

image for illustration purposes only



5	WASHER	BeCu	NICKEL
4	NUT	BRASS	NICKEL
3	INSULATOR	PTFE	N/A
2	CENTRE CONTACT	PHOS. BR.	GOLD
1	BODY	BRASS	NICKEL
ITEM	DESCRIPTION	MATERIAL	PLATING

A4	SHEET 1 OF 1	DIMENSIONS ARE IN MILLIMETRES		
REVISION :	A03	NAME	SIGNATURE	DATE
ISSUE :	2	DRAWN	IG	28/02/2013
		CHK'D	GE	07/03/2013
		APPV'D		
<p>6-8 COLNE ROAD, TWICKENHAM, MIDDLESEX. TW1 4JR</p> <p>THE INFORMATION IS GIVEN AS AN INDICATION ONLY AND IS SUBJECT TO CHANGE WITHOUT NOTICE. IN THE CONTINUAL GOAL TO IMPROVE OUR PRODUCTS, WE RESERVE THE RIGHT TO MAKE ANY MODIFICATIONS NECESSARY WITHOUT PRIOR NOTICE.</p>				