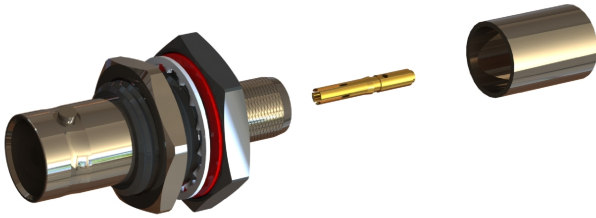
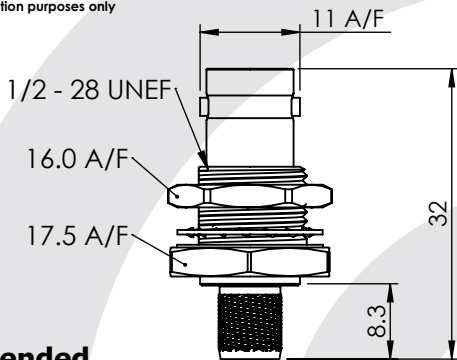


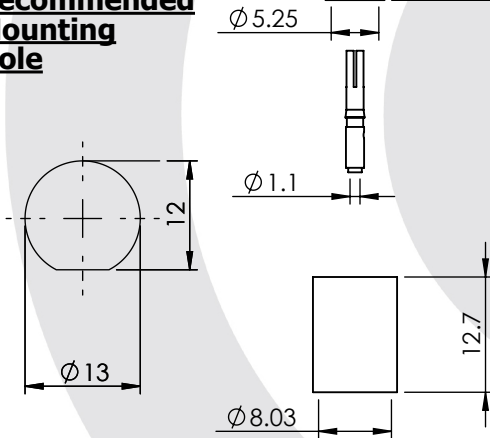
BNC STRAIGHT INSULATED BULKHEAD CRIMP / CRIMP JACK 10-258-B36-FC



images for illustration purposes only



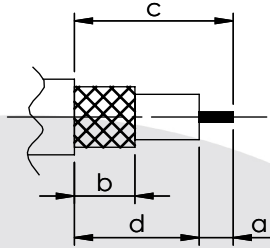
Recommended Mounting Hole



Suitable for Cables:

(FC) Belden 1694A, Belden 1694F, Draka 1.0/4.8 A/F, BD SD11, Image 1000

Stripping Dimensions



- a = 4.0 mm
- b = 8.0 mm
- c = 19.0 mm
- d = 15.0 mm

* CUT FOIL TO DIM. "b"

Assembly Procedure: AP001

Tooling

Centre Contact: Hex 1.72mm A/F Tool No: 96-HTS-75 & 76

Crimp Sleeve: Hex 8.23mm A/F Tool No: 96-HTS-75 & 76

Alignment Tool: N/A

Extraction: N/A

Environmental Specification

Operating Temp: -55 to +155 Deg C.

IP Rating (Mated): IP 64

Electrical Specification

Impedance: 75 Ohm

Frequency: 0-4.5 GHz

Dielectric W/V: 1500 Veff

Insulation res: 5000 M-Ohm

Mechanical Specification

Contact Retention: 10 N min

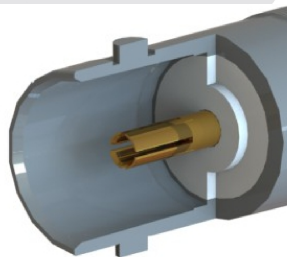
Cable Retention: 200 N min

Mating cycles: 250

Weight: 13.96 g

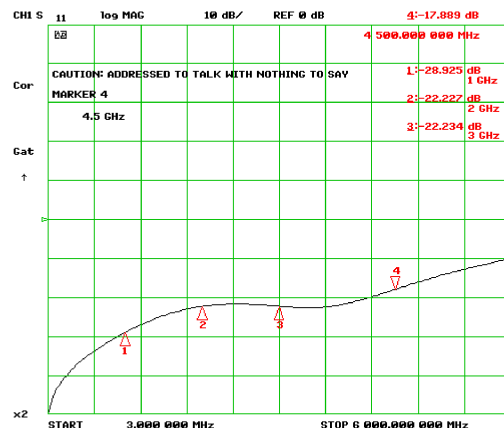
Connector Interface

image for illustration purposes only



- 28.9 dB @ 1.0 GHz
- 22.2 dB @ 2.0 GHz
- 22.2 dB @ 3.0 GHz
- 17.9 dB @ 4.5 GHz

Return Loss Graph



ITEM	DESCRIPTION	MATERIAL	PLATING
7	OVERMOULDING	ABS	N/A
6	NUT	BRASS	NICKEL
5	GASKET	SILICONE	N/A
4	CRIMP SLEEVE	BRASS	NICKEL
3	INSULATOR	PTFE	N/A
2	CENTRE CONTACT	PHOSPHOR BRONZE	GOLD
1	BODY	BRASS	NICKEL

A4	SHEET 1 OF 1		DIMENSIONS ARE IN MILLIMETRES		
REVISION :	A00		NAME	SIGNATURE	DATE
ISSUE :	1		DRAWN	IG	26/09/2013
			CHK'D	GE	27/09/2013
6-8 COLNE ROAD, TWICKENHAM, MIDDLESEX. TW1 4JR		APP'VD			<small>THE INFORMATION IS GIVEN AS AN INDICATION ONLY AND IS SUBJECT TO CHANGE WITHOUT NOTICE. IN THE CONTINUAL GOAL TO IMPROVE OUR PRODUCTS, WE RESERVE THE RIGHT TO MAKE ANY MODIFICATIONS NECESSARY WITHOUT PRIOR NOTICE.</small>