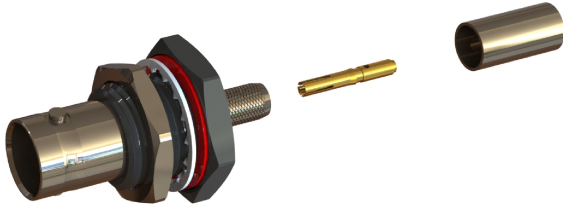
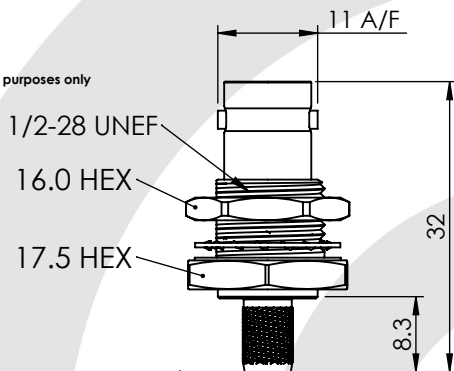


## BNC STRAIGHT INSULATED BULKHEAD CRIMP / CRIMP JACK

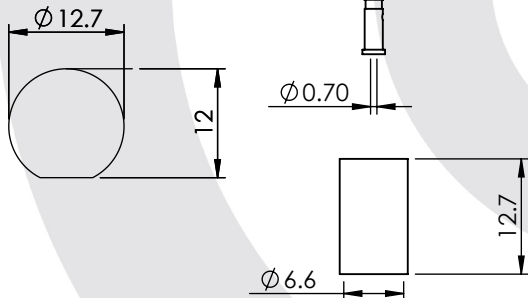
### 10-258-B36-FB



images for illustration purposes only



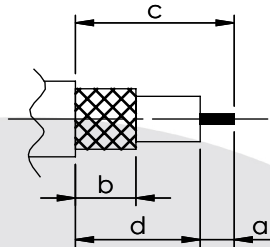
### Recommended Mounting Hole



### Suitable for Cables:

(FB) Belden 1505A, Draka 0.8/3.7 A/F, Image 720

### Stripping Dimensions



- a = 4.0 mm
- b = 8.0 mm
- c = 19.0 mm
- d = 15.0 mm

\* CUT FOIL TO DIM. "b"

### Assembly Procedure: AP001

### Tooling

Centre Contact: Hex 1.72mm A/F Tool No: 96-HTS-76

Crimp Sleeve: HEX 6.48mm A/F Tool No: 96-HTS-76

Alignment Tool: N/A Extraction: N/A

### Environmental Specification

Operating Temp: -55 to +155 Deg C.

IP Rating (Mated): IP 64

### Electrical Specification

Impedance: 75 Ohm

Frequency: 0-4.5 GHz

Dielectric W/V: 1500 Veff

Insulation res: 5000 M-Ohm

### Mechanical Specification

Contact Retention: 10 N min

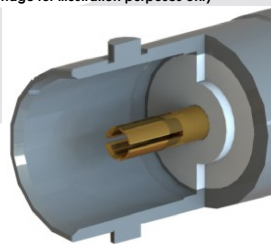
Cable Retention: 150 N min

Mating cycles: 250

Weight: 13.33 g

### Connector Interface

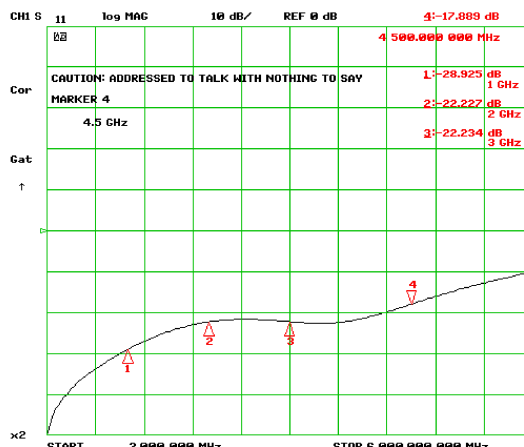
image for illustration purposes only



### Performance

- 28.9 dB @ 1.0 GHz
- 22.2 dB @ 2.0 GHz
- 22.2 dB @ 3.0 GHz
- 17.9 dB @ 4.5 GHz

### Return Loss Graph



7	NUT	BRASS	NICKEL
6	OVERMOULDING	ABS	N/A
5	GASKET	SILICONE	N/A
4	CRIMP SLEEVE	BRASS	NICKEL
3	INSULATOR	PTFE	N/A
2	CENTRE CONTACT	PHOSPHOR BRONZE	GOLD
1	BODY	BRASS	NICKEL
ITEM	DESCRIPTION	MATERIAL	PLATING

<b>A4</b>	SHEET 1 OF 1	DIMENSIONS ARE IN MILLIMETRES			
REVISION :	A00		NAME	SIGNATURE	DATE
DRAWN :	1		IG		26/09/2013
ISSUE :			CHK'D	GE	27/09/2013
APPV'D					
6-8 COLNE ROAD, TWICKENHAM, MIDDLESEX. TW1 4JR					
THE INFORMATION IS GIVEN AS AN INDICATION ONLY AND IS SUBJECT TO CHANGE WITHOUT NOTICE. IN THE CONTINUAL GOAL TO IMPROVE OUR PRODUCTS, WE RESERVE THE RIGHT TO MAKE ANY MODIFICATIONS NECESSARY WITHOUT PRIOR NOTICE.					