

© 2008, THIS DOCUMENT IS THE PROPERTY OF COAX CONNECTORS LTD. REPRODUCTION OR COMMUNICATION IN ANY FORM TO A THIRD PARTY IS PROHIBITED WITHOUT PRIOR WRITTEN CONSENT.

**Assembly Procedure** WEBSITE VIDEO No. -

1. Slide crimp sleeve onto cable
2. Strip cable
3. Slide centre contact onto cable conductor up to cable dielectric
4. Ensure that the conductor is visible through the Contact inspection hole.
5. Crimp the centre contact using appropriate sized crimping tool
6. Fan the braid out
7. Slide the cable into the connector and push home until the centre contact "CLICKS" into place
8. Slide the crimp sleeve over the braid
9. Crimp the crimp sleeve using the appropriate sized crimp tool (trim excess braid if necessary)



**Electrical Specification**

Impedance: 50 Ohm  
 Frequency: 0 - 4 GHz  
 Dielectric W/V: 1500 V rms  
 Insulation res: 5000 M-Ohm

**Mechanical Specification**

Centre contact retention  
 Axial Force: 27N  
 Cable Retention: 200N  
 Mating cycles: 500


**Environmental Specification**

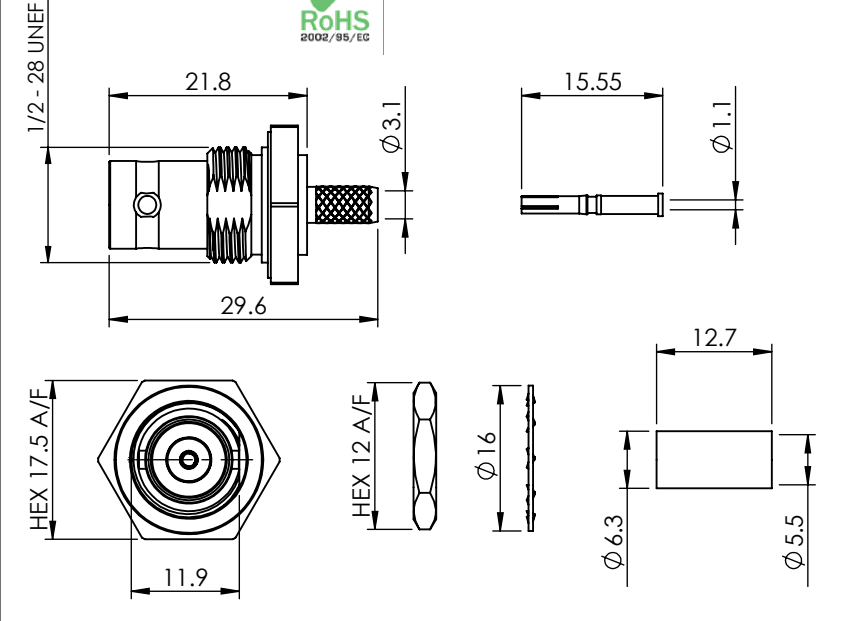
Operating Temp: -35 to +70 Deg C

**Tooling**

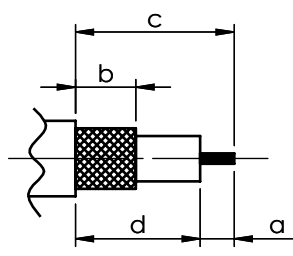
Centre Contact: HEX 1.72mm A/F  
 COAX Tool No: 336A  
 Crimp Sleeve: HEX 5.41mm A/F  
 COAX Tool No: 336A



DO NOT SCALE DRAWING  **DATA SHEET** SHEET 1 OF 1



**STRIPPING DIMENSIONS**



a = 4.0mm  
 b = 8.0mm  
 c = 16.0mm  
 d = 12.0mm



**COAX CONNECTORS LTD**  
 6-8 COLNE ROAD, TWICKENHAM,  
 MIDDLESEX. TW1 4JR

**Description** BNC B/H CRIMP JACK FOR RG223

**Part Number** 10-254-A3-AK

REVISION : A00	A4	DIMENSIONS ARE IN MILLIMETERS		
ISSUE : 2		NAME	SIGNATURE	DATE
	DRAWN	GE		23/10/2010
	CHK'D	PR		23/10/2010
	APPV'D			
THE INFORMATION IS GIVEN AS AN INDICATION ONLY AND IS SUBJECT TO CHANGE WITHOUT NOTICE. IN THE CONTINUAL GOAL TO IMPROVE OUR PRODUCTS, WE RESERVE THE RIGHT TO MAKE ANY MODIFICATIONS NECESSARY WITHOUT PRIOR NOTICE.				

8	CRIMP SLEEVE	BRASS	NICKEL
7	CENTRE CONTACT	BRASS	GOLD
6	NUT	BRASS	NICKEL
5	WASHER	BRASS	NICKEL
4	GASKET	SILICONE	N/A
3	BACK BODY	BRASS	NICKEL
2	INSULATOR	DELTRIN	N/A
1	BODY	BRASS	NICKEL
<b>ITEM</b>	<b>DESCRIPTION</b>	<b>MATERIAL</b>	<b>PLATING</b>