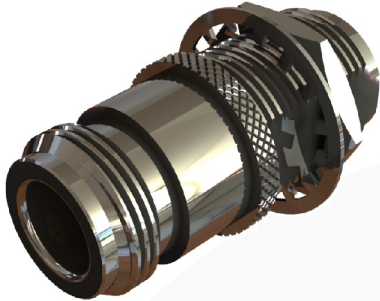
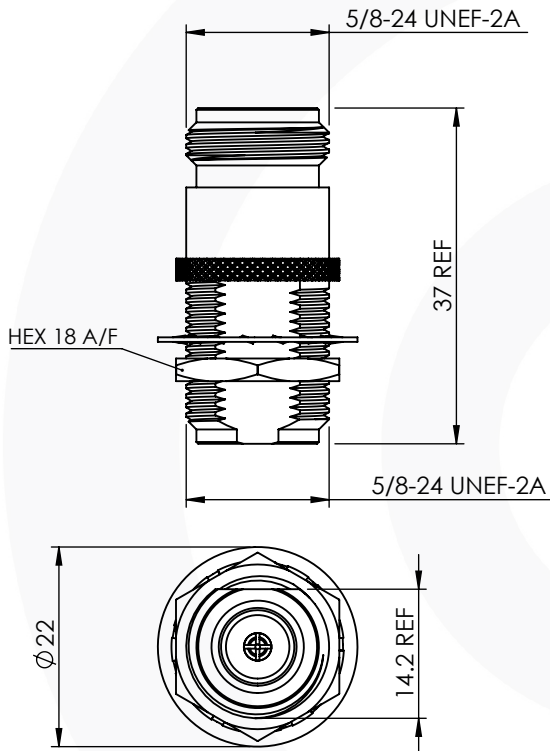


## N TYPE F-F B/H ADAPTOR

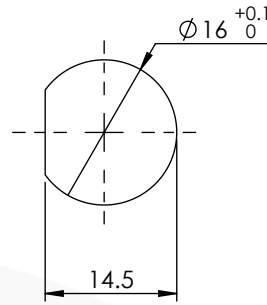
### 25-501-B3



images for illustration purposes only



### Recommended Mounting Hole:



MAX. PANEL THICKNESS: 3mm

### Tooling

Centre Contact: N/A Tool No: N/A

Crimp Sleeve: N/A Tool No: N/A

### Environmental Specification

Operating Temp: -35 to +70 Deg C

IP Rating (Mated): IP 40

### Electrical Specification

Impedance: 50 Ohm

Frequency: DC - 6GHz GHz

Dielectric W/V: TBC Veff

Insulation res: TBC M-Ohm

### Mechanical Specification

Contact Retention: TBA N min

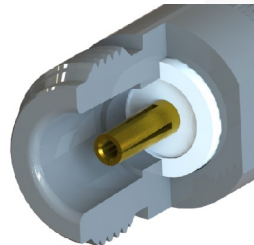
Cable Retention: N/A N min

Mating cycles: 500

Weight: 47.63 g

### Connector Interface

image for illustration purposes only



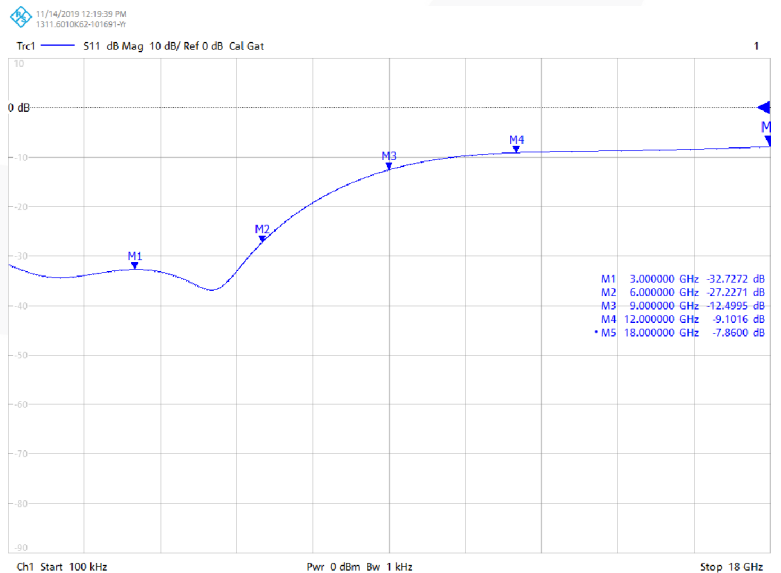
-32.7 dB @ 3.0 GHz

-27.2 dB @ 6.0 GHz

-12.5 dB @ 9.0 GHz

-9.1 dB @ 12.0GHz

### Return Loss Graph



| 5    | WASHERS        | BRASS        | NICKEL  |
|------|----------------|--------------|---------|
| 4    | NUT            | BRASS        | NICKEL  |
| 3    | INSULATOR      | DELTRIN      | N/A     |
| 2    | CENTRE CONTACT | PHOS. BRONZE | GOLD    |
| 1    | BODY           | BRASS        | NICKEL  |
| ITEM | DESCRIPTION    | MATERIAL     | PLATING |

|  |              |                               |           |            |
|--|--------------|-------------------------------|-----------|------------|
| <b>A4</b>  | SHEET 1 OF 1 | DIMENSIONS ARE IN MILLIMETRES |           |            |
| REVISION :   | A00          | NAME                          | SIGNATURE | DATE       |
| ISSUE :  | 3            | DRAWN                         | GE        | 23/08/2010 |
|  |              | CHK'D                         | PS        | 23/08/2010 |
|  |              | APPV'D                        |           |            |
| <p>6-8 COLNE ROAD,<br/>TWICKENHAM,<br/>MIDDLESEX.<br/>TW1 4JR</p> <p>THE INFORMATION IS GIVEN AS AN INDICATION ONLY AND IS SUBJECT TO CHANGE WITHOUT NOTICE. IN THE CONTINUAL GOAL TO IMPROVE OUR PRODUCTS, WE RESERVE THE RIGHT TO MAKE ANY MODIFICATIONS NECESSARY WITHOUT PRIOR NOTICE.</p> |              |                               |           |            |